



Nicole Sarwono
nicole.sarwono@gmail.com
(425)894-4224

ARCH 352-02 Jeff Ponitz
ARCH 307-02 Jeff Ponitz
Winter 2018

TABLE OF CONTENTS

- 1_Resumé
- 2_Written Reflection
- 3_Studio Project—Final Images
- 4_Evidence of Integrated Design
- 5_Studio Project—Process Images
- 6_Precedents for Studio Project
- 7_Images Citation Page



NICOLE SARWONO

ABOUT ME

Hi, I'm Nicole. I am an energetic and fast learner. I love collaborating with others and working on a team. I am a dedicated 3rd year architecture student at Cal Poly and I am passionate about everything I do.

CONTACT

nicole.sarwono@gmail.com
(425) 894-4224
660 Johnson Ave, Apt J
San Luis Obispo, CA
nicolesarwono.com

EDUCATION

CALIFORNIA POLYTECHNIC STATE UNIVERSITY

Class of 2020
Bachelor of Architecture
CAED honors
The National Society of Collegiate Scholars (NSCS)

SPECIAL SKILLS

AutoCAD
Rhino
Adobe Illustrator
Adobe InDesign
Adobe PhotoShop
Microsoft Word
Microsoft PowerPoint
Microsoft Excel

EXPERIENCE

ARCHITECTURAL INTERN FERGUSON-ETTINGER ARCHITECTS

Summer 2017

Experience rendering, drafting, model making for modern housing projects in the Santa Barbara

STUDENT PRINT SPECIALIST CALPOLY PRINT AND COPY

2017 - ongoing

Interact positively with customers, interpret various printing and binding needs, and deliver product as efficiently as possible. Complete printing orders for posters, brochures, and fliers. Trim, bind, and package products.

GRAPHIC DESIGNER ELLIPSIS ACADEMY

2017 - ongoing

Design brochures, advertisements, fliers, banners, and logos for Ellipsis Academy's afterschool enrichment programs. Graphically represent the company and its goals.

SET DESIGNER REDMOND ACADEMY OF THEATER ARTS

2013 - ongoing

Design and build sets for the Redmond Academy of Theater Arts. Provide the design idea as well as construction schedules to complete the set. Credits include Seussical Jr., Beauty and the Beast, Into the Woods, The Happy Elf, and A Christmas Carol

FREELANCE ARTIST

2011 - ongoing

Design and produce brochures, flyers, and logos for small companies. Create and sell various pieces of art to customers such as paintings, drawings, and sculptures. Favorite mediums include acrylic paint, watercolors, and ink pen.

MATH COACH AND PROCTOR ELLIPSIS ACADEMY

2011 - 2015

Coached a group of fourth grade students in mathematics and proctored various math competition events.

LEADERSHIP

DESIGN VILLAGE COMMITTEE DESIGN

2017 - 2018

Co-president of the Design Village committee at Cal Poly responsible for organizing the Design Village 2018 event.

RELAY FOR LIFE COMMITTEE

2014 - 2015

Planned and coordinated the Relay for Life event ceremonies which included the opening, luminaria, and closing ceremony. Advocated for building youth engagement in Relay for Life within Redmond High School.

RELAY FOR LIFE TEAM CAPTAIN

2011 - 2015

Led a Relay for Life team for four years. This includes organizing fundraisers, providing fundraising opportunities, demonstrating effective fundraising, encouraging the team, showing enthusiasm for the cause, and arranging periodic meetings to get everyone

2_WRITTEN REFLECTION

How would you describe what Winter Quarter of Third Year is all about, in your own words?

It is pulling all of what you have learned about design, systems integration, and human comfort all together. It is when you start to connect the little things you have learned into a tangible project.

How would you describe your studio's project brief, in your own words? How did your instructor design and organize the studio to aid your development of this work?

Our project is a library of the future in Oakland, CA. We started with site response diagrams that would give us a catalog of design strategies to incorporate in or projects. Keeping this catalog in the back of my mind helped aid design decisions. After this site response catalog, we developed thesis statements to base our design solution off of. My thesis statement included a condition of the future that a library could help improve.

Discuss your project's concept and design process. Discuss how the development of your project progressed throughout the quarter, and mention areas that you think could be improved upon.

My first individual project thesis statement was a library that would host the new wave of technology to allow equal access to this technology that would be so necessary for people to be integrated into society. My second project done with a partner is a library that brings the luxury goods of art and technology to the public.

How did your Arch 307 Design Integration Section evolve from Project 1 (LaunchPad Review) to Project 2 (final submission)? If you worked on different projects for each of these sections, how did your approach to and understanding of integrated sections develop from Project 1 to Project 2?

Because the projects had different concepts, the formal languages varied. However, because they were in the exact same site the same site analysis applied and both the projects used the same top 3 strategies.

How did the Arch 307 "Test Fit" labs contribute to your understanding of your studio project, or inform your design thinking for your studio project?

The test fit labs helped with the basic understanding of the lighting differences and EUI differences between different formal gestures.

What ideas or processes from Arch 307 were you able to successfully integrate into your design studio project this quarter? Do you have any suggestions for improving the integration of Arch 307 content with your studio work?

I was able to draw from Lab 1 where we studied the psychometric chart of Oakland and decided the top three strategies we would implement in our project.

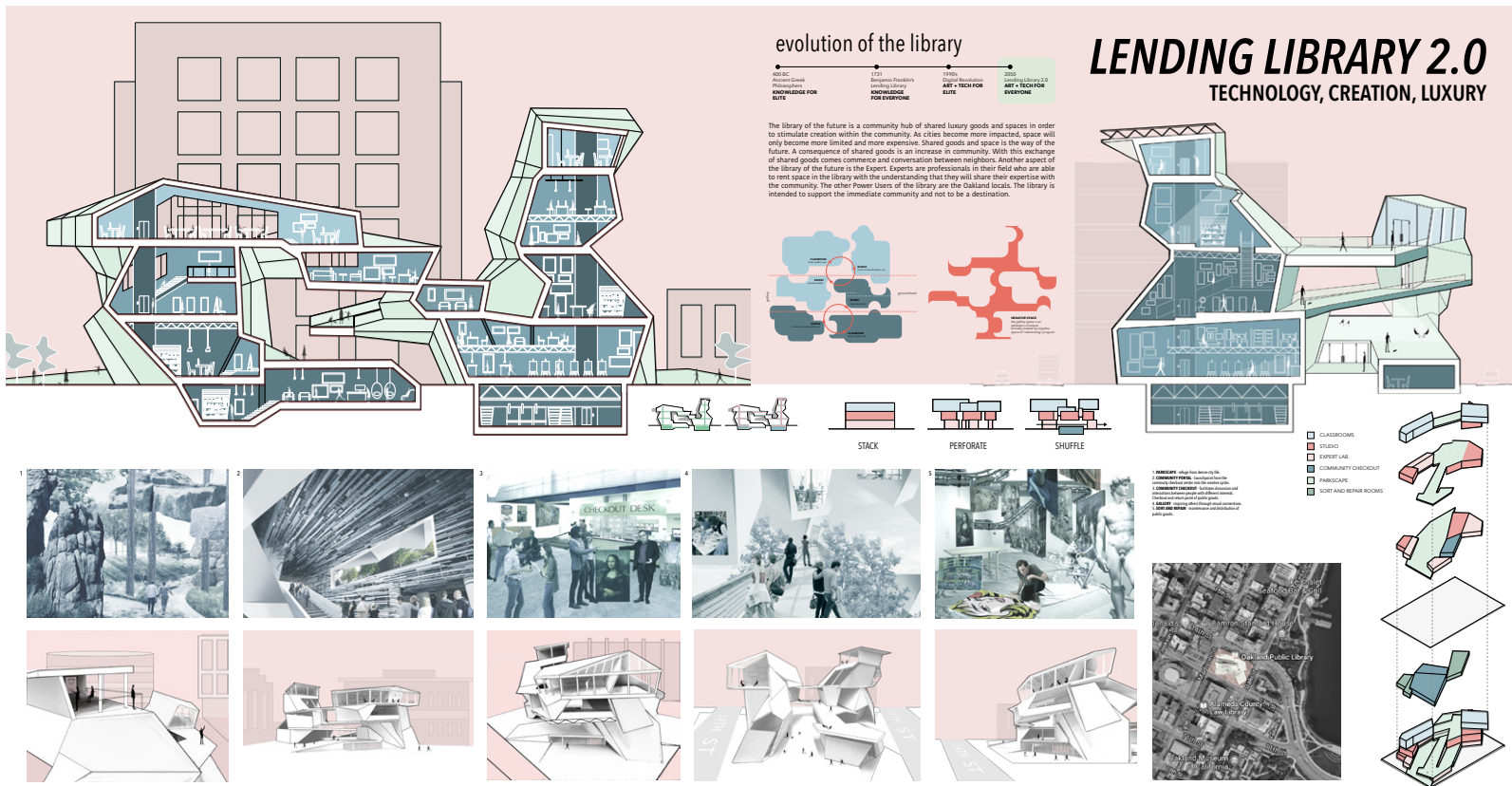
How did Common Hour presentations, pin-ups, and activities contribute to your work and education this quarter? Do you have any suggestions for improving Common Hour in the future?

Pin ups are nice to see how different studios approach a similar project. Common hour is an easy to listen to lecture where we all can focus on a small thing that can help us in studio. The common hour lecture I remember being most helpful was the one on diagramming and modelling. The topic was directly related to what I was working on so I found it most helpful.

3_STUDIO PROJECT—FINAL IMAGES

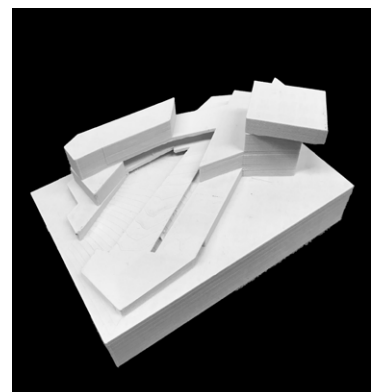
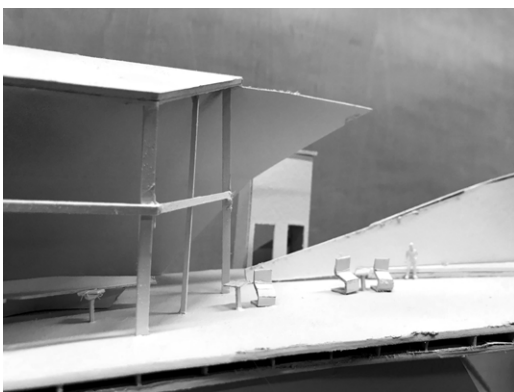
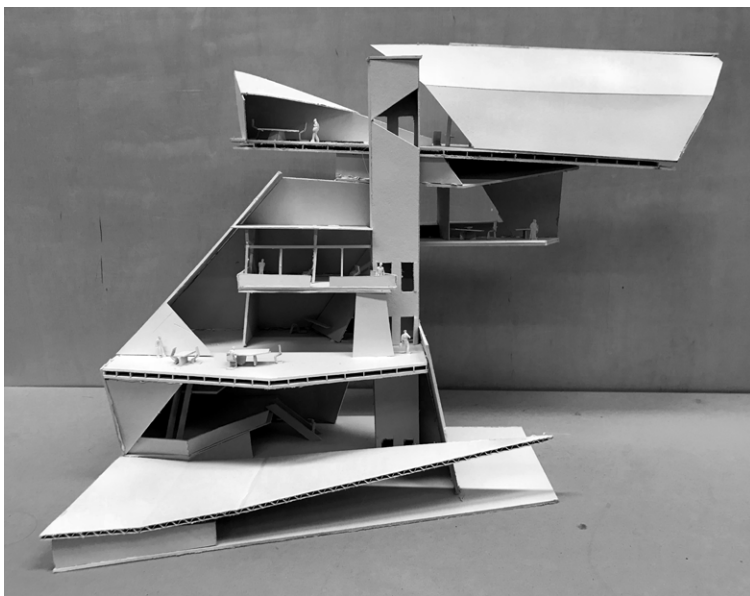
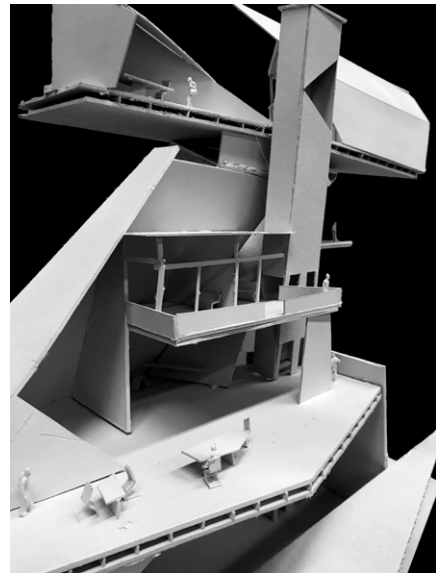
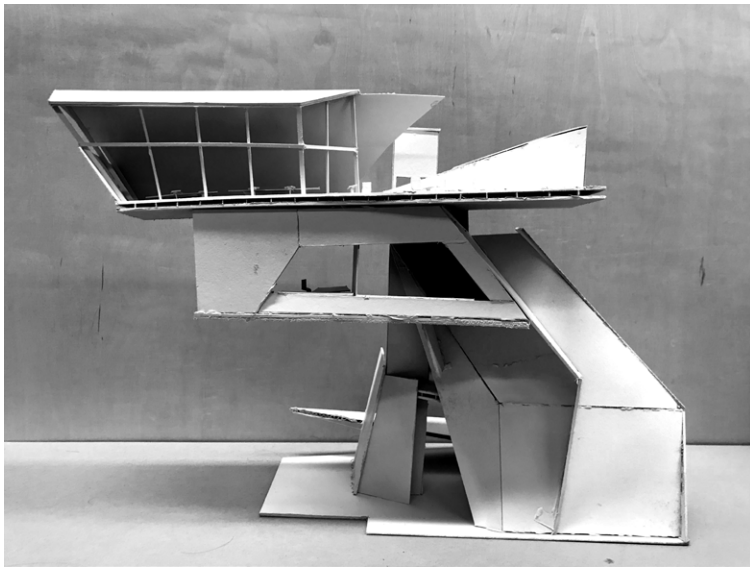
Weeks 7-10
Partner: Tess Stilman

FINAL POSTER:

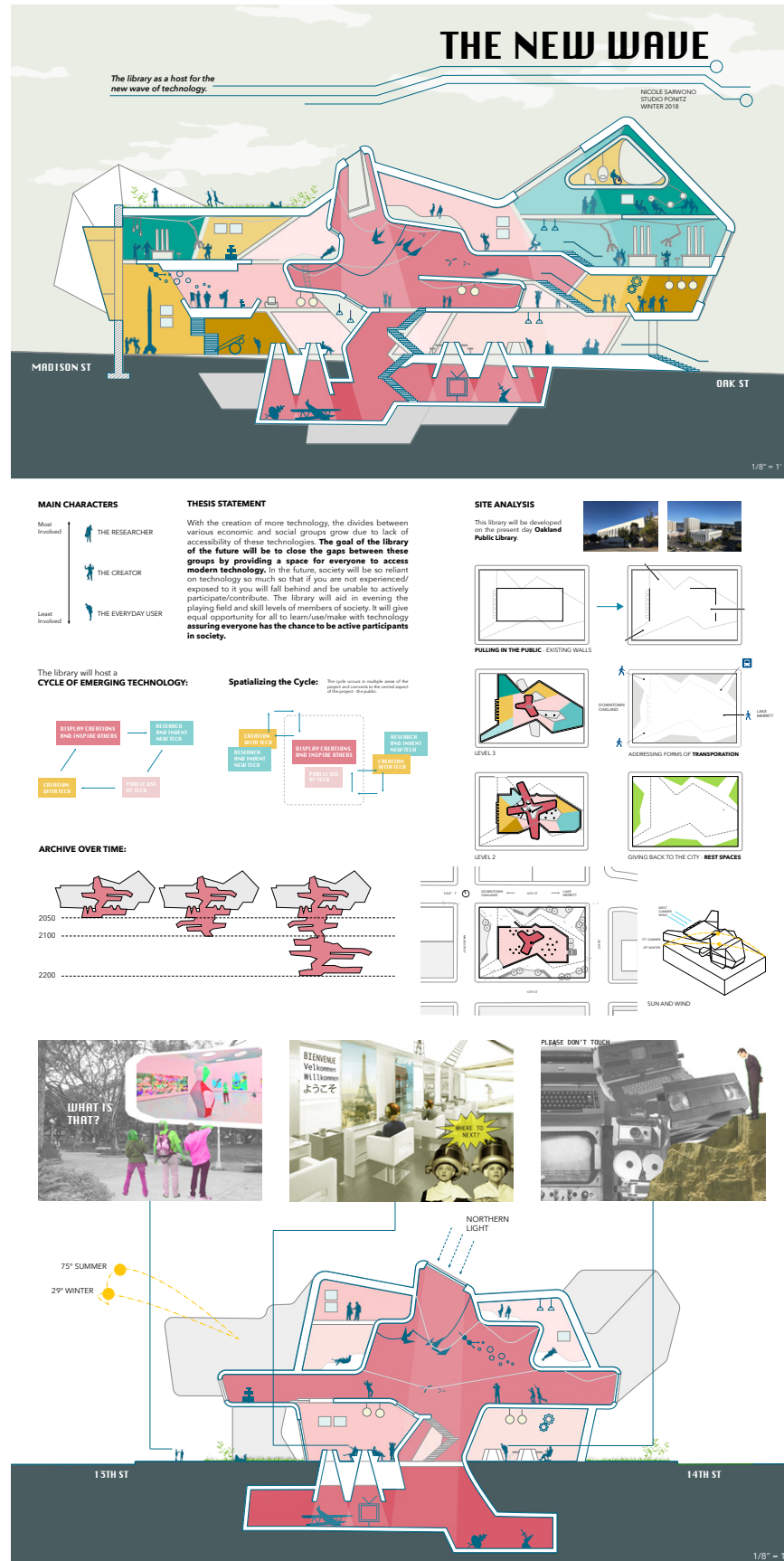


STUDIO PROJECT—FINAL IMAGES (CONTINUED)

Weeks 7-10
Partner: Tess Stilman



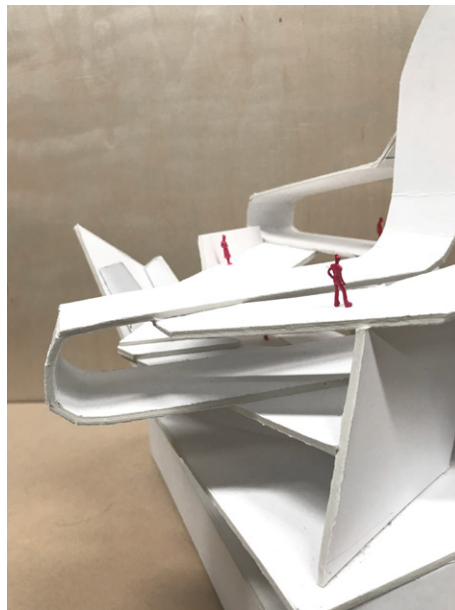
FINAL POSTER:



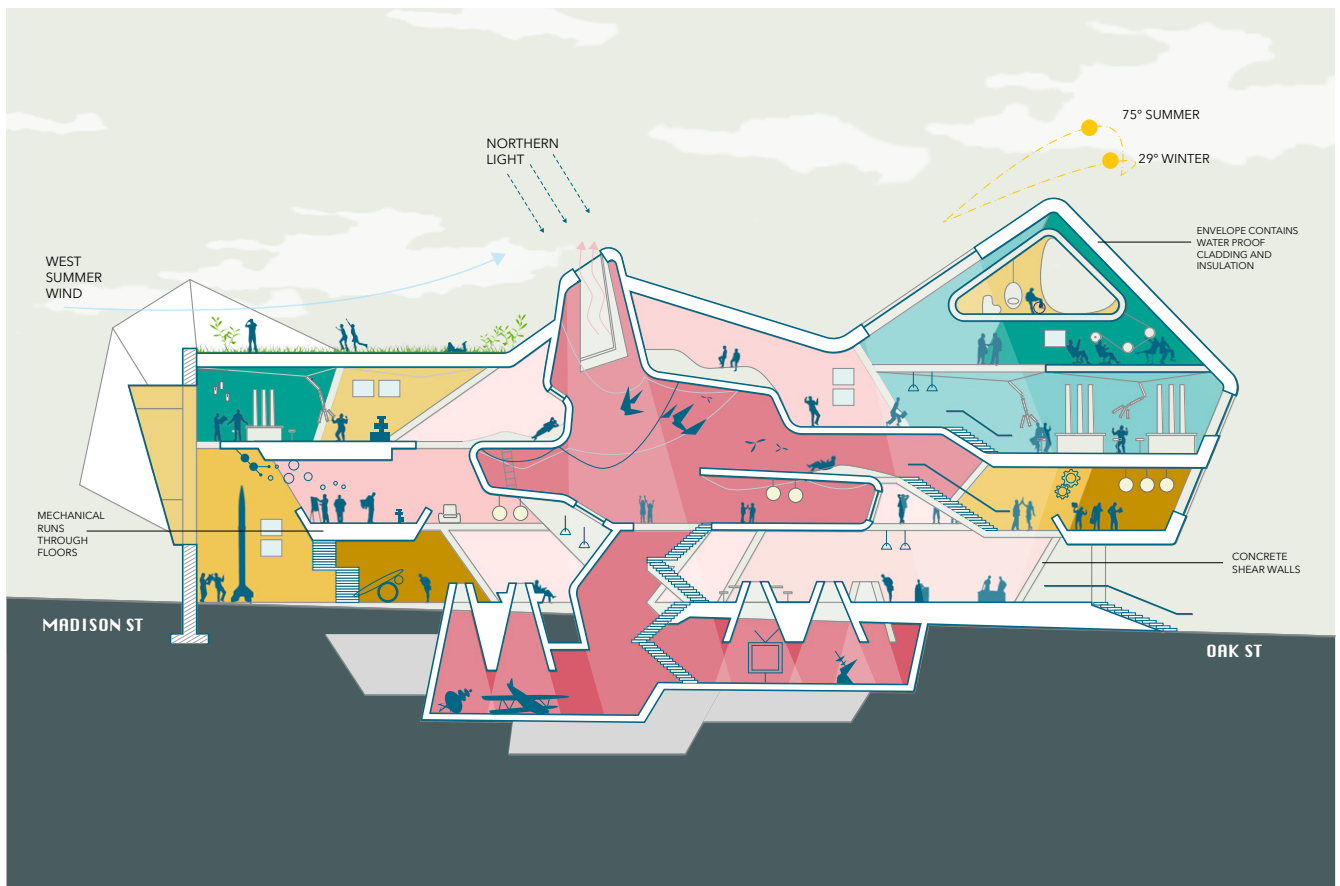
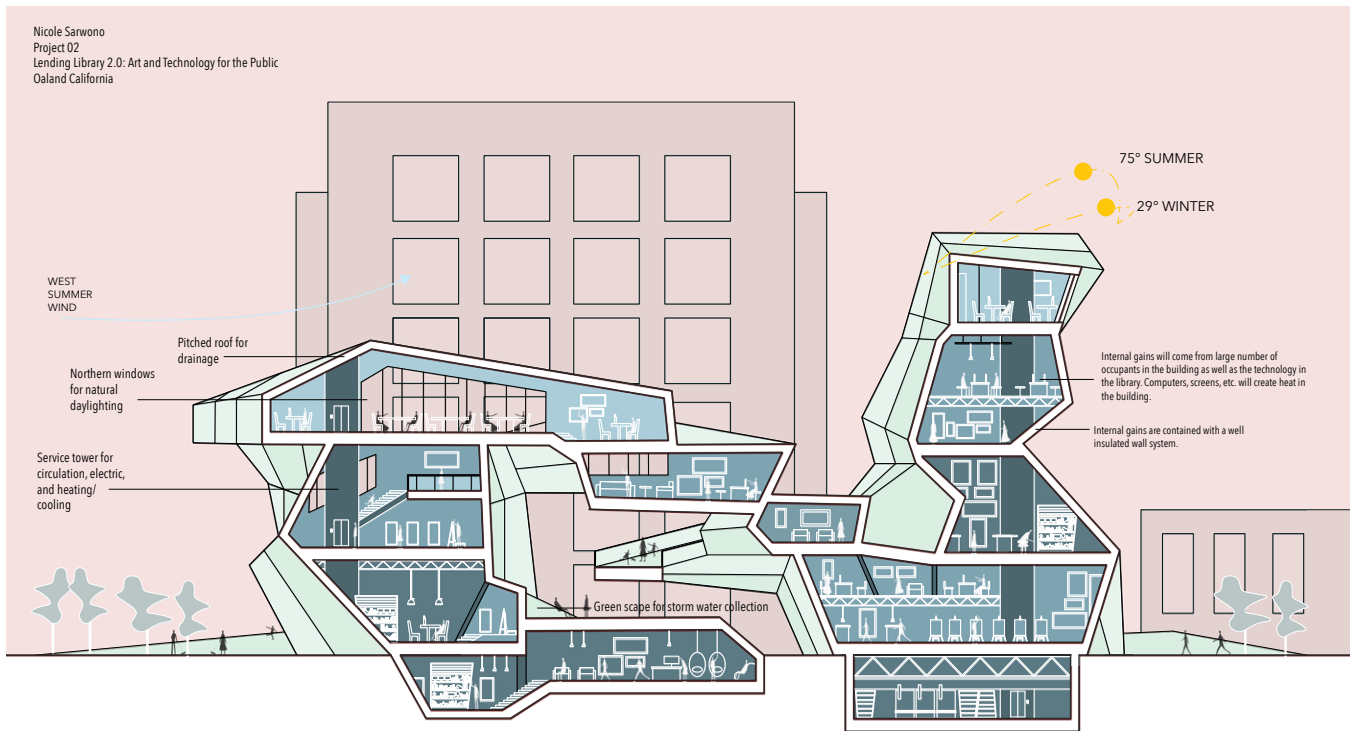
nominated as a studio representative to participate in Cal Poly's annual Super Review.

4_STUDIO PROJECT—FINAL IMAGES (CONTINUED)

Weeks 1-6
Individual work



STUDIO PROJECT—EVIDENCE OF INTEGRATED DESIGN

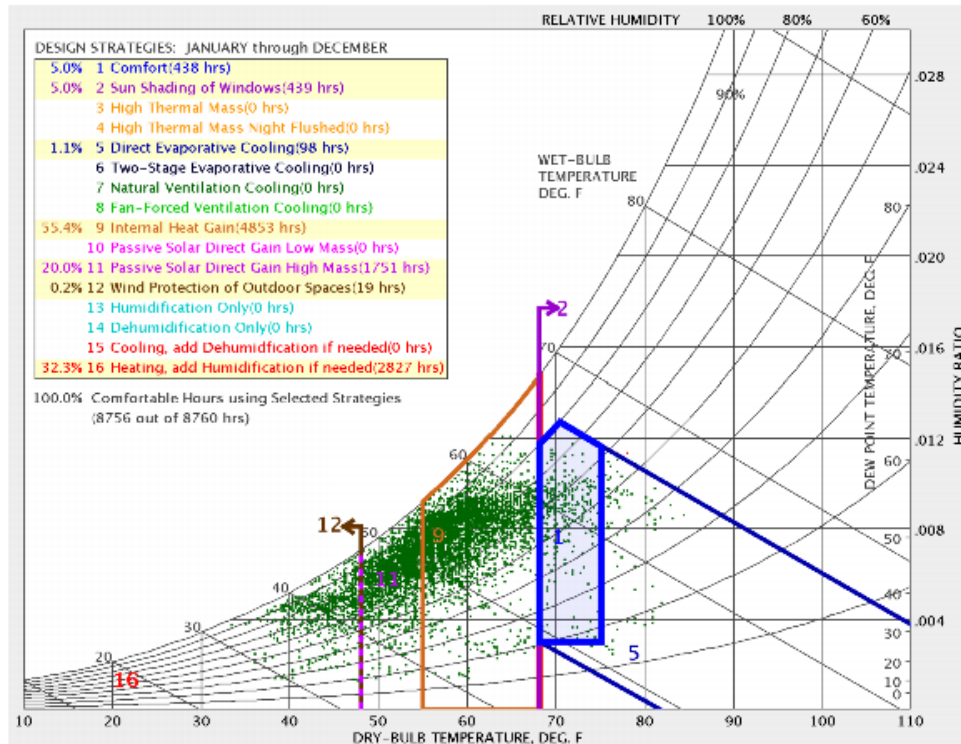


5_STUDIO PROJECT—PROCESS IMAGES

Strategies to explore in Studio Project:

1. Internal Heat Gain
2. Passive Solar Direct Heat Gain
3. Mechanical Heating

I chose these three types of design strategies to explore because using them would create the most significant impact on the comfort levels of inhabitants measured by hours of comfort.



TARGET EUI: 23

School in Oakland, CA, USA

Properties

Total Floor Area 46,118 sq ft

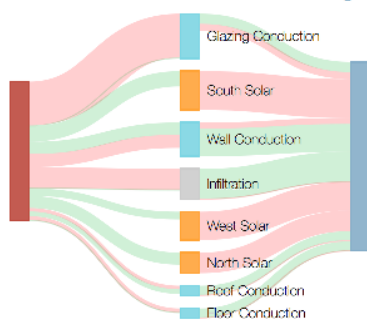


Gains & Losses

Guidance

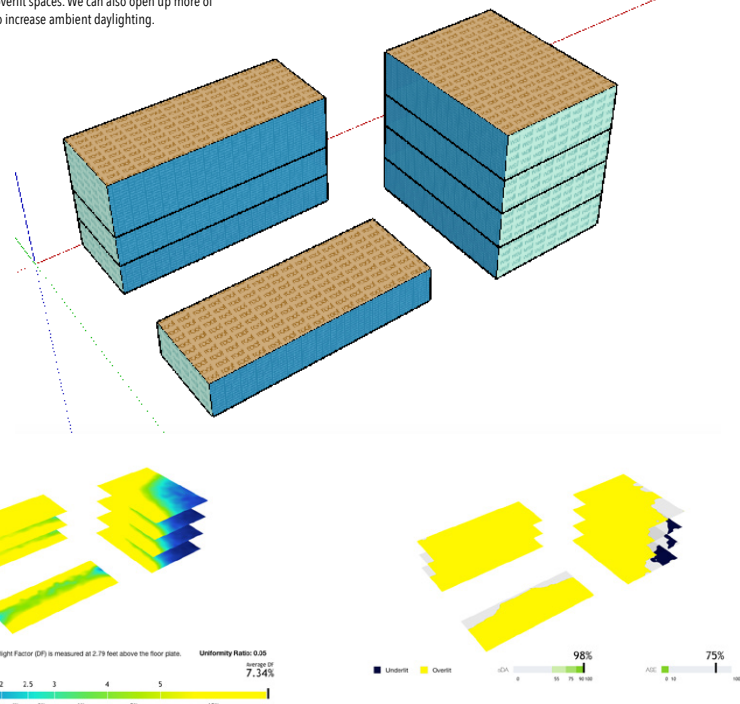
Impact on Heating

Impact on Cooling

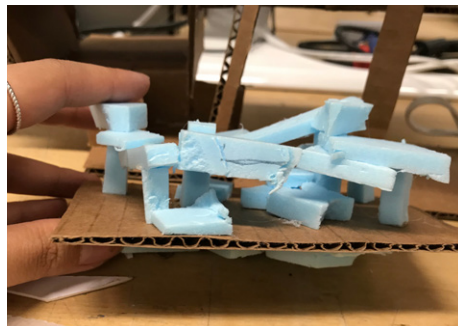
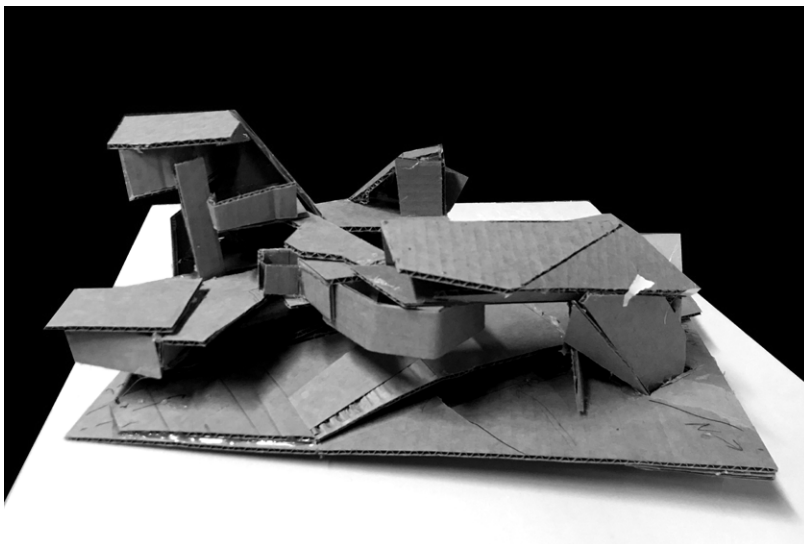
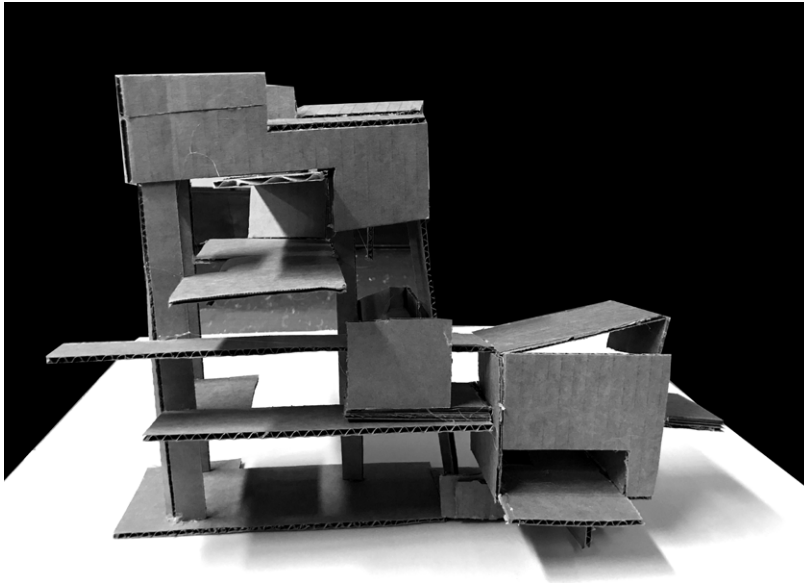


☐ Include active gains and losses

The building in its form and orientation already almost meets its target EUI. It is interesting that most of the energy use is lighting dominated but we also have mostly overlit spaces. I think that by extending the envelope out to create shading and using a screen as part of the skin to diffuse light in overlit areas, there will be less overlit spaces. We can also open up more of the north facade to increase ambient daylighting.



STUDIO PROJECT—PROCESS IMAGES (CONTINUED)



6_PRECEDENTS FOR STUDIO PROJECT



7_IMAGE CITATIONS

http://www.energymonitor.tudelft.nl/Building/Details?objectCode=21__GM_TOT

<https://www.visitnorway.com/places-to-go/eastern-norway/oslo/oslo-opera-house/>