

CONES, BUBBLES, & BARS

PROJECT TYPE: Mixed-use: Google Complex, Commercial, Equinox Hotel, Housing
LOCATION: Los Angeles, CA
WHEN: 4th Year, Winter 2019
PROFESSOR: Stephen Phillips

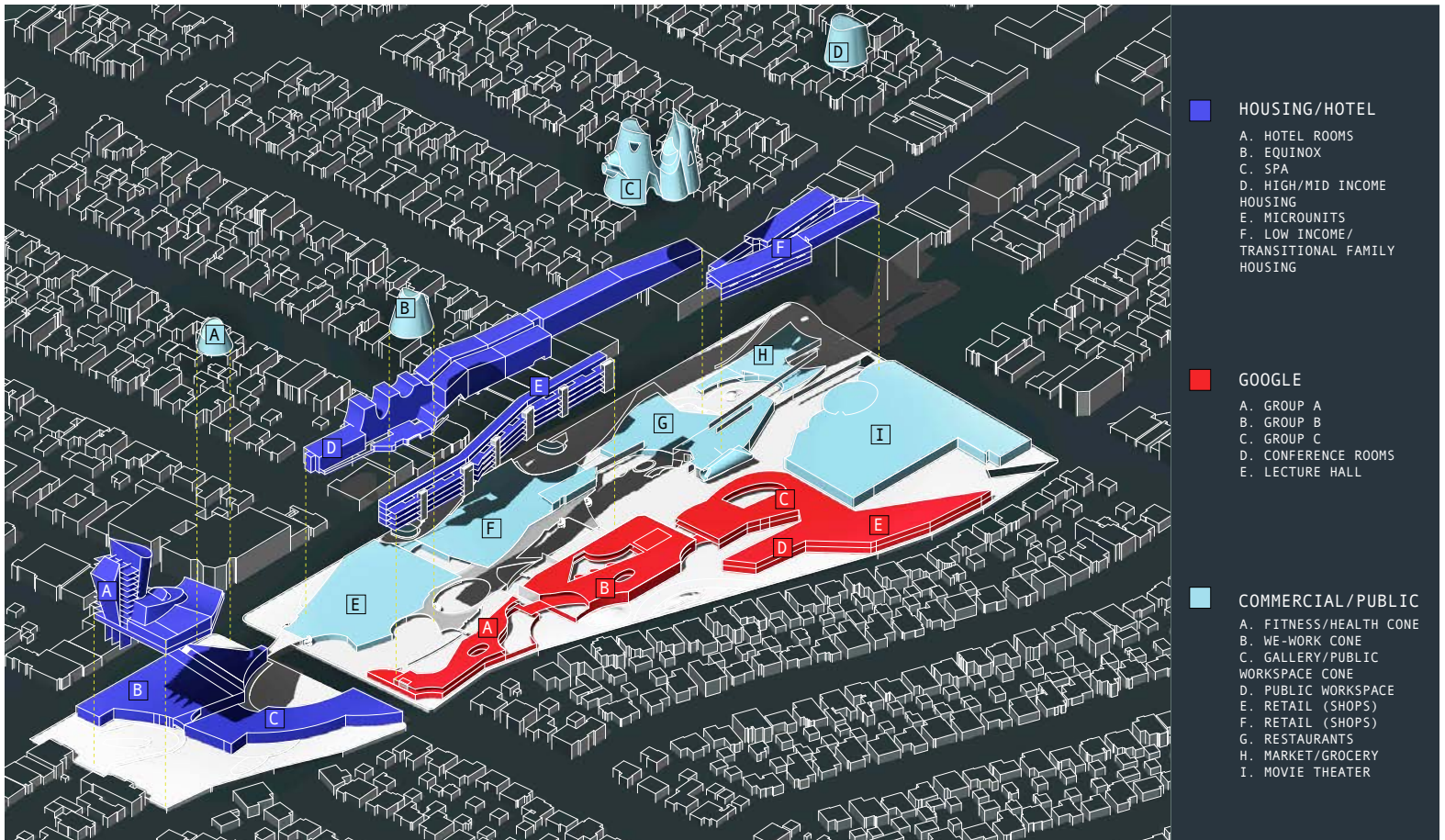
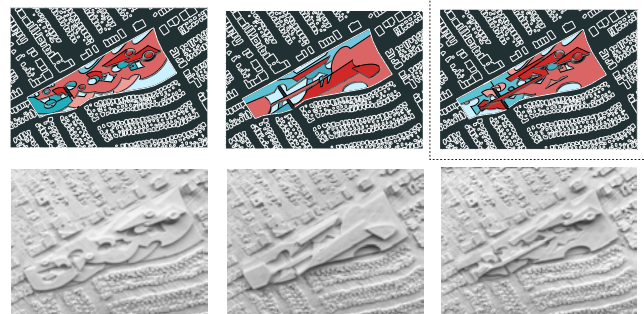


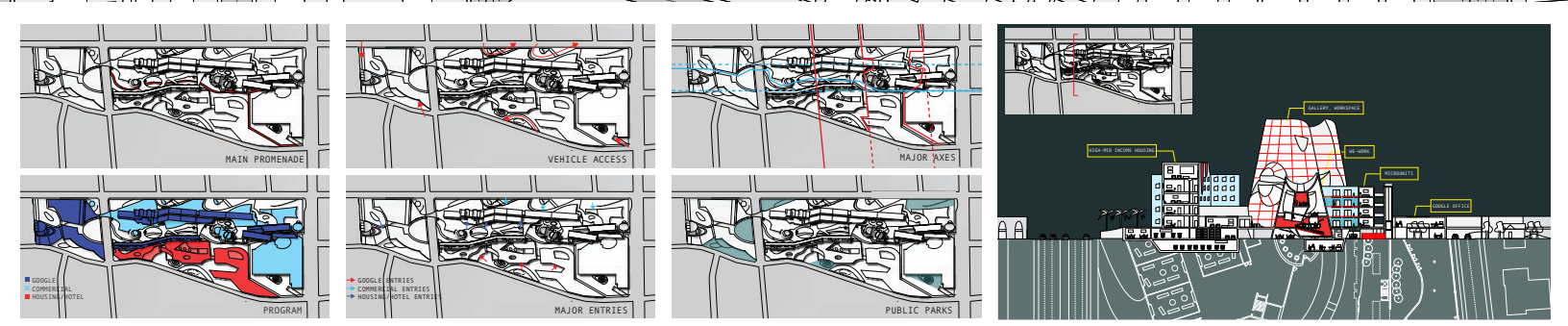
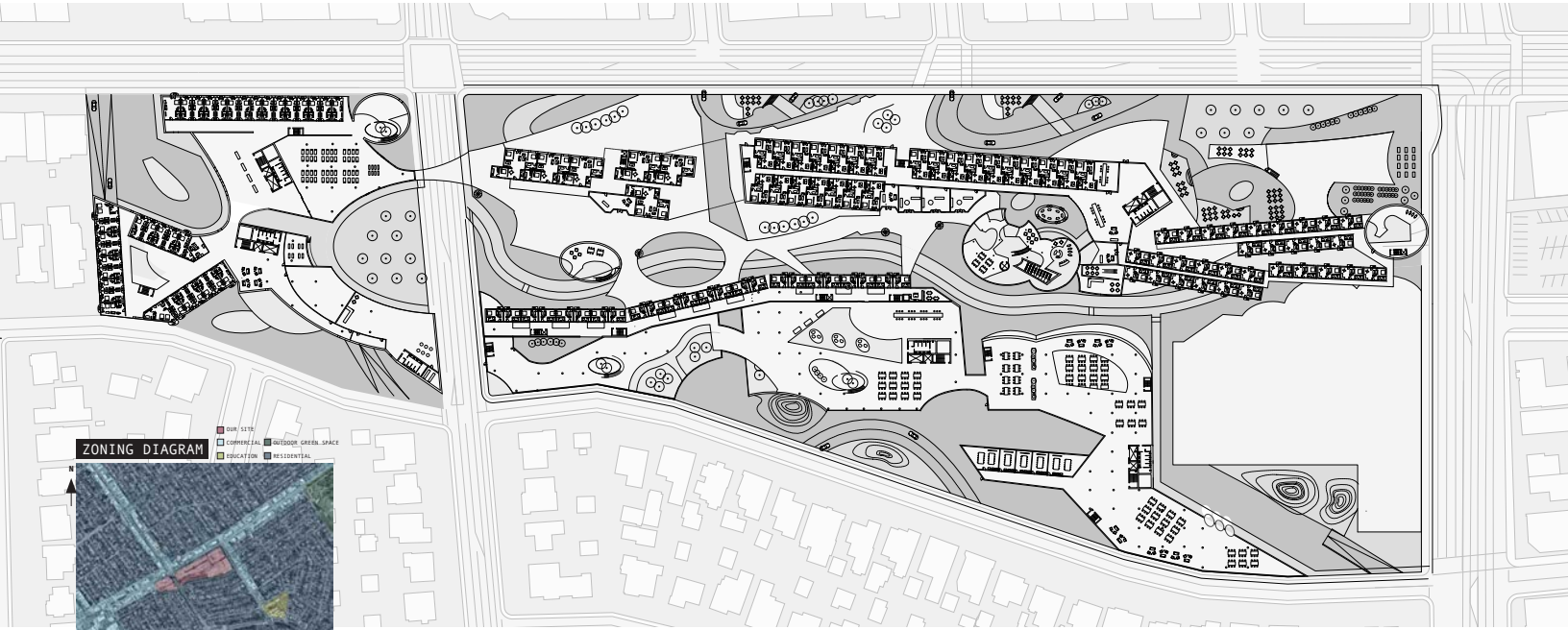
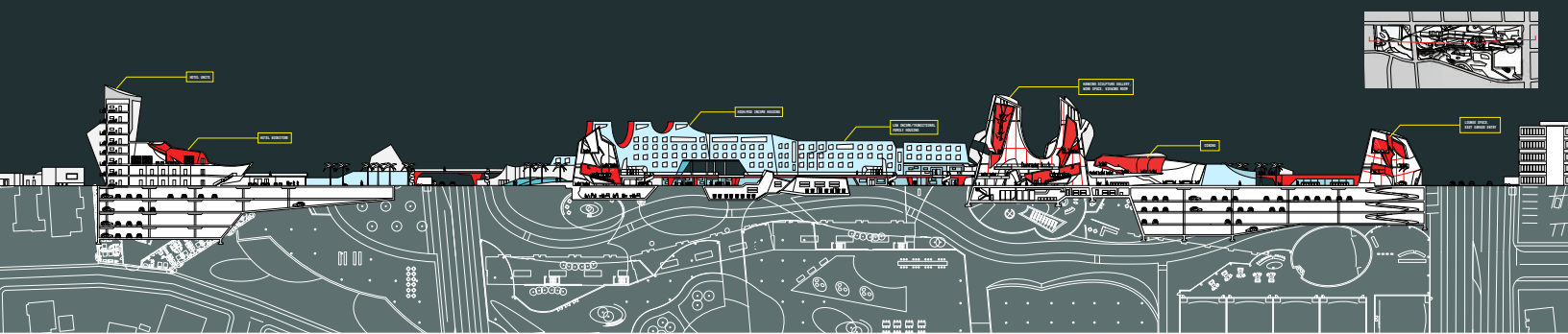
ARCHITECTURAL CONCEPT: Cones create variation in architectural vocabulary across the site and stand out as iconic forms. Cones can create playful spatial conditions and profiles. Distribution of these iconic forms can contrast more normative architectural elements that stretch throughout the site.

PROGRAM CONCEPT: Cones, bubbles, and bars are composed on the site. Cones serve as icons filled with various themed social spaces (health, gallery, theater, work space, etc.). Bubbles are residual spaces that create overlapping outdoor areas for circulating. Bars are filled with housing units and create directional axes through the site. Intersections between cones, bubbles, and bars, provide access points between programs for circulation.

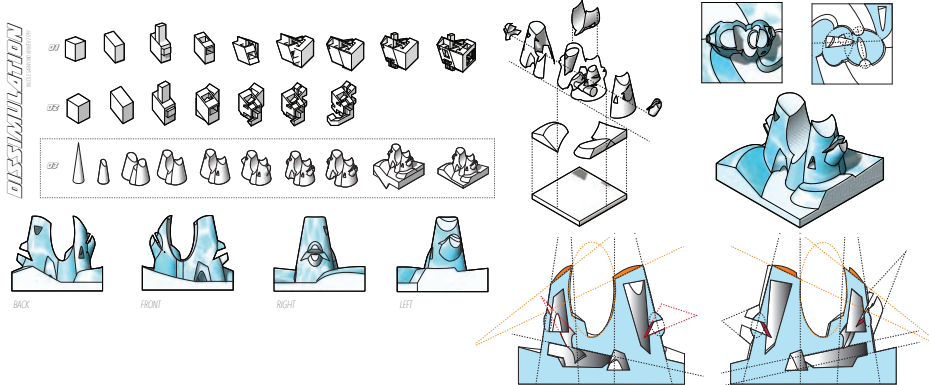
URBAN CONCEPT: Housing is elevated above other program for privacy, the hotel and cinema are on the west and east sides for separate visitor access while Google and retail are pushed to the north and south sides creating a central promenade between them for visitors. The project has axes off existing roads for porosity and buildings are shifted back from the edge for a sense of entry through outdoor public spaces.

The icons (cones) reflect the LA landmark scene as eye-catching moments distributed throughout the site. The project serves as a model for the urban lifestyle that consists of playful architectural spaces with outdoor areas of gathering and community building.



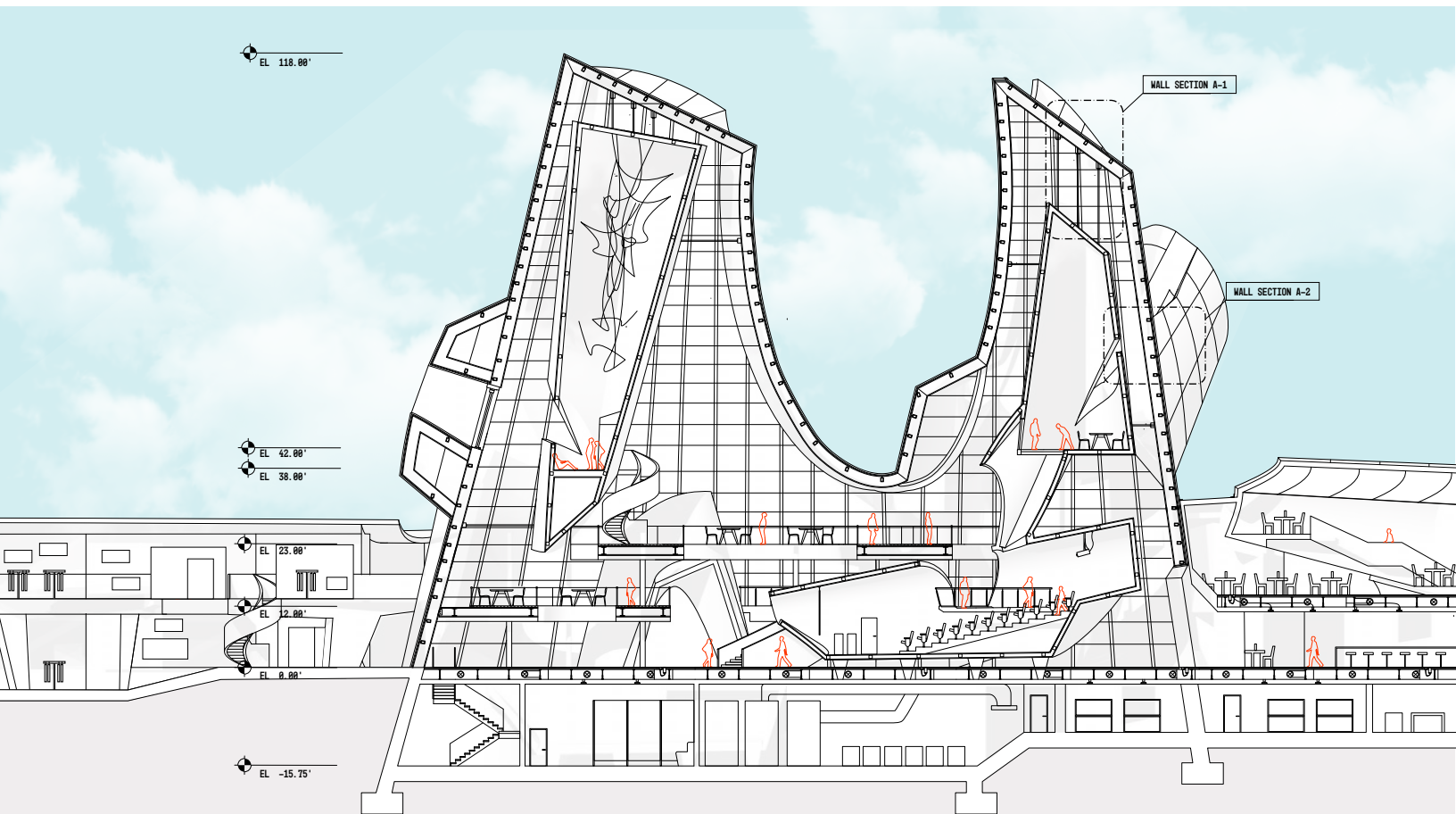
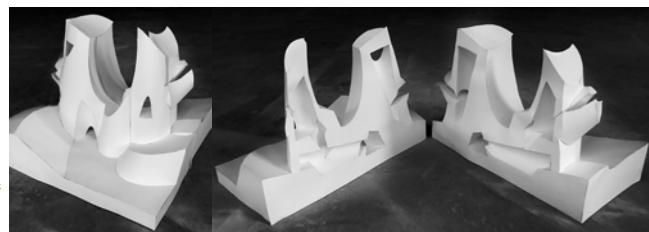


GENERATION



PROCESS:

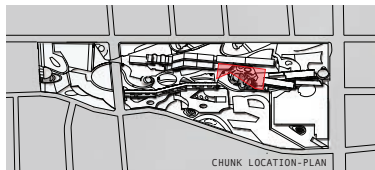
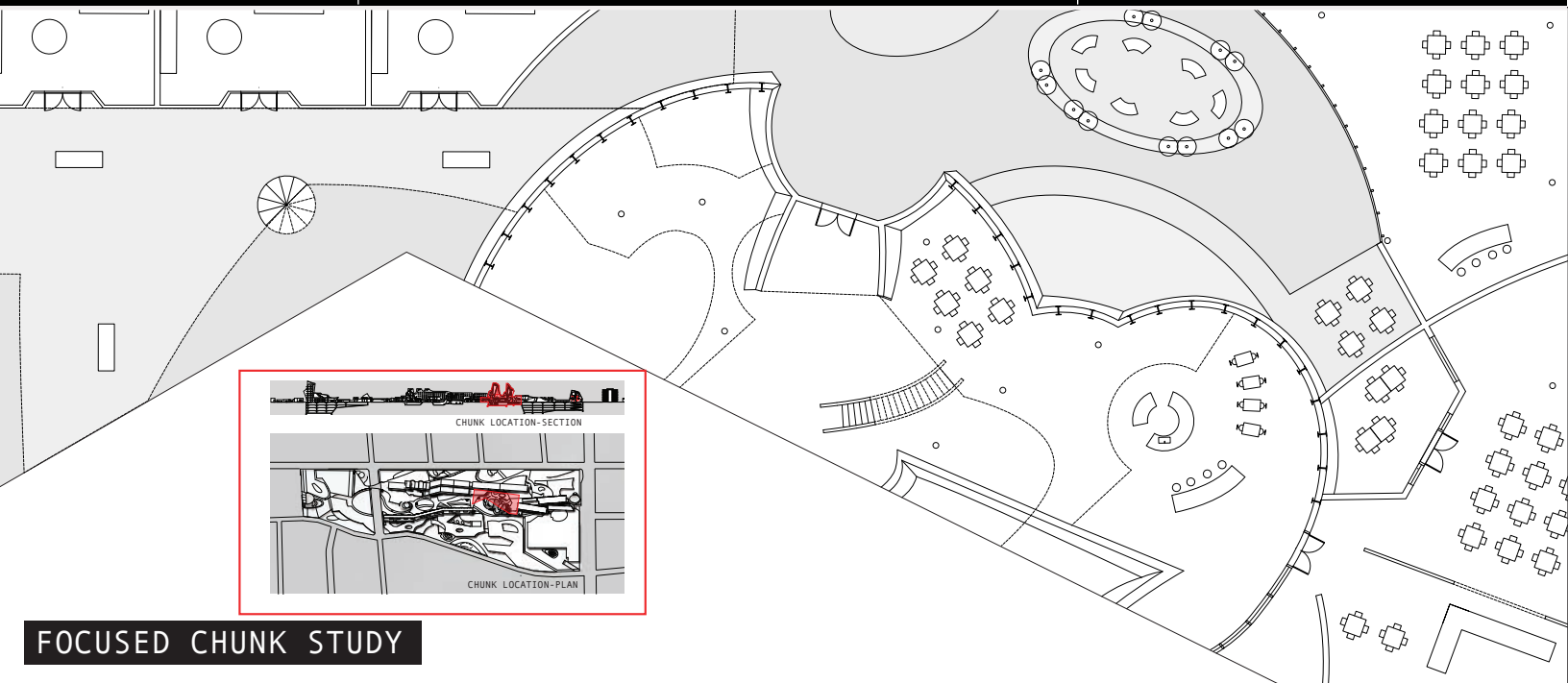
A geometric study of primitives led to an interest in how cones can create playful spatial conditions, guiding paths, and interesting profiles.



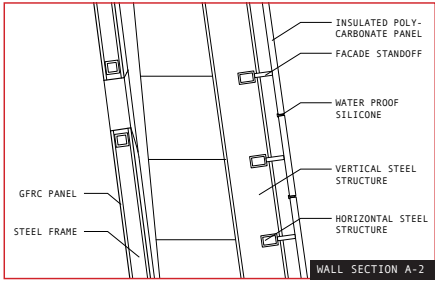
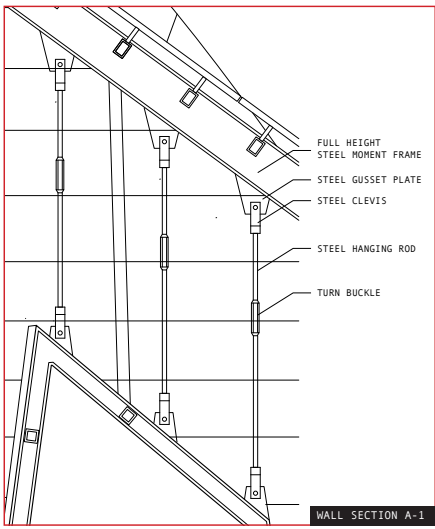
NORTH SECTION -- CHUNK

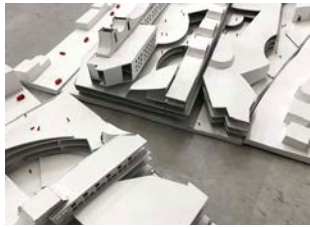
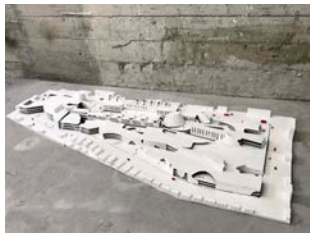
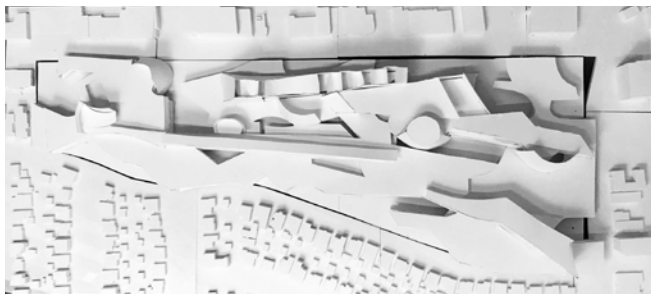
GALLERY SPACE, SMALL THEATER, COMMUNAL WORK SPACE, RESTAURANT

10800 W PICO BLVD SUITE 312, LOS ANGELES, CA 90064



FOCUSED CHUNK STUDY





LENDING LIBRARY 2.0

EVOLUTION OF THE LIBRARY

THE KEY TO PUBLIC SUCCESS

400 BC
Ancient Greek Philosophers
KNOWLEDGE FOR ELITE

1731
Benjamin Franklin's
Lending Library
KNOWLEDGE FOR EVERYONE

1990's
Digital Revolution
ART + TECH FOR ELITE

2050
Lending Library 2.0
ART + TECH FOR EVERYONE



GALLERY

OF EXPERTS, STUDIOS, AND CLASSROOMS



+ CHECKOUT

ALL THE ART/TECH SUPPLIES YOU COULD WISH FOR



= INSPIRED COMMUNITY

PROJECT TYPE: Public Library

LOCATION: Oakland, CA

WHEN: 3rd Year, Spring 2018

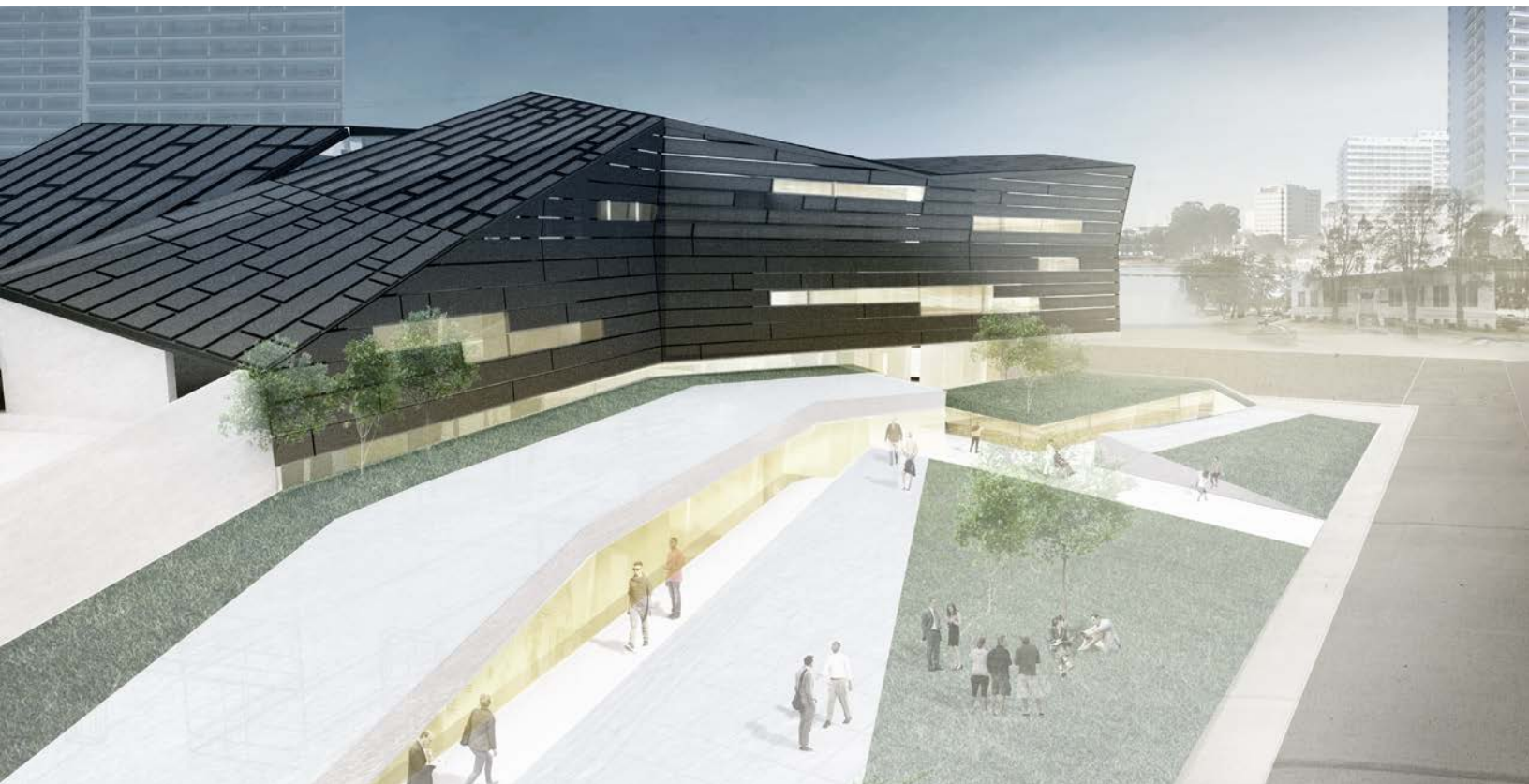
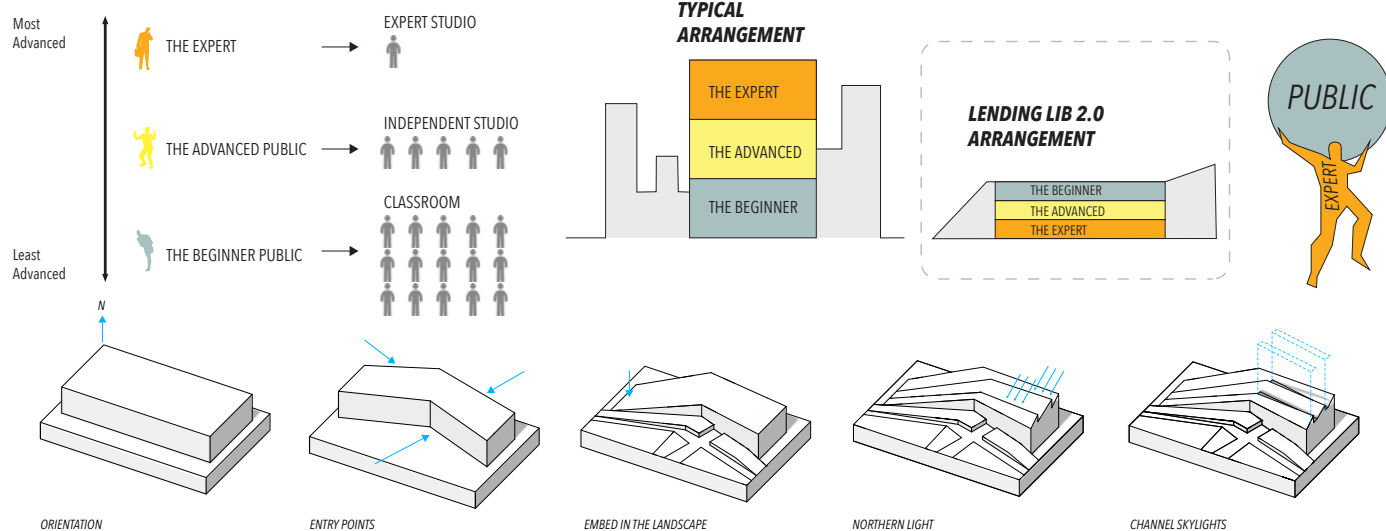
PROFESSOR: Jeff Ponitz

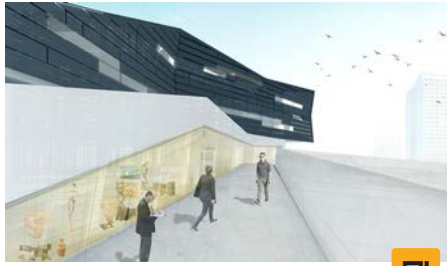
AWARDS/RECOGNITION: Best of Show Cal Poly 2018 Runners-Up

*Done in collaboration with Tess Stilman

I designed the initial building massing while my partner focused on the exposed structure. We collaborated on the program organization and cladding design with research on precedents and discussion on the role of a library in a community.

PROJECT DESCRIPTION: The library has historically provided goods that aid success that the public does not have access to yet. The library of the future will provide the luxury goods of art and technology to the public to stimulate creation and success within the community in the digital age.





GALLERY OF PUBLIC GOODS

01



COMMUNITY CHECK OUT

02



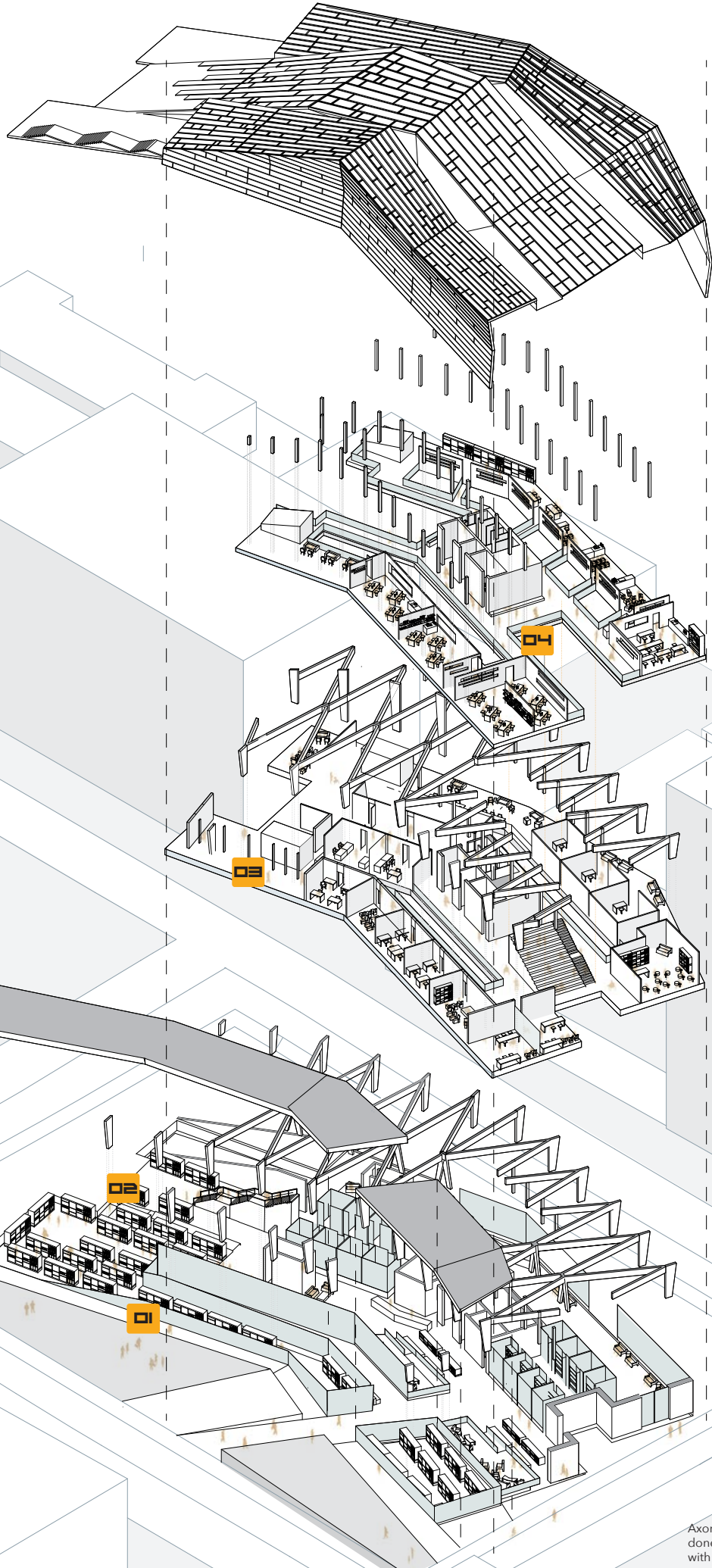
INHABITING THE SKIN

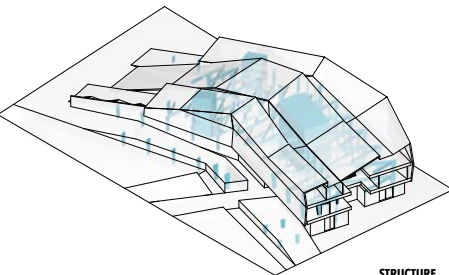
03



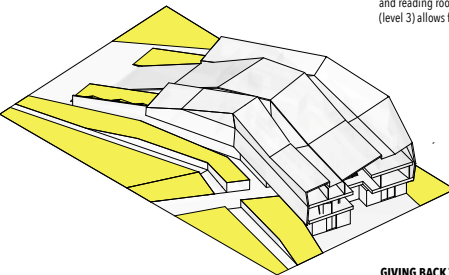
ALONG THE CHANNEL

04

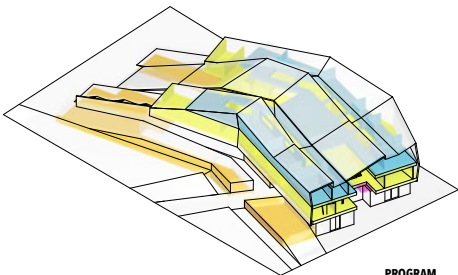




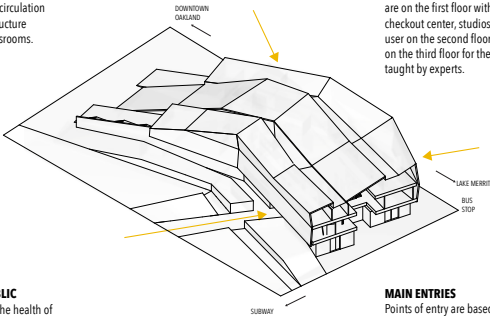
STRUCTURE
Concrete structure (levels 1 and 2) provides spacial division for circulation and reading rooms. Steel structure (level 3) allows for open classrooms.



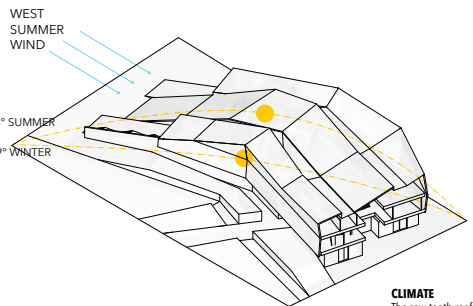
GIVING BACK TO THE PUBLIC
Greenspace is essential to the health of a city, especially oakland. Adding parkspace to the library offers healthy outdoor work areas that aid in public advancement.



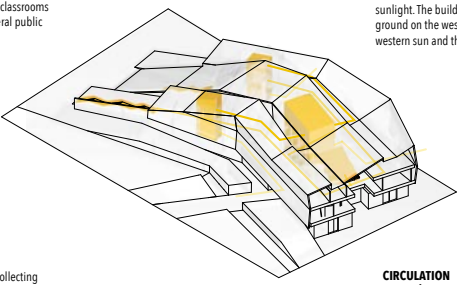
PROGRAM
Floors are divided by user: expert offices are on the first floor with the community check-out center, studios for the advanced user on the second floor, and classrooms on the third floor for the general public taught by experts.



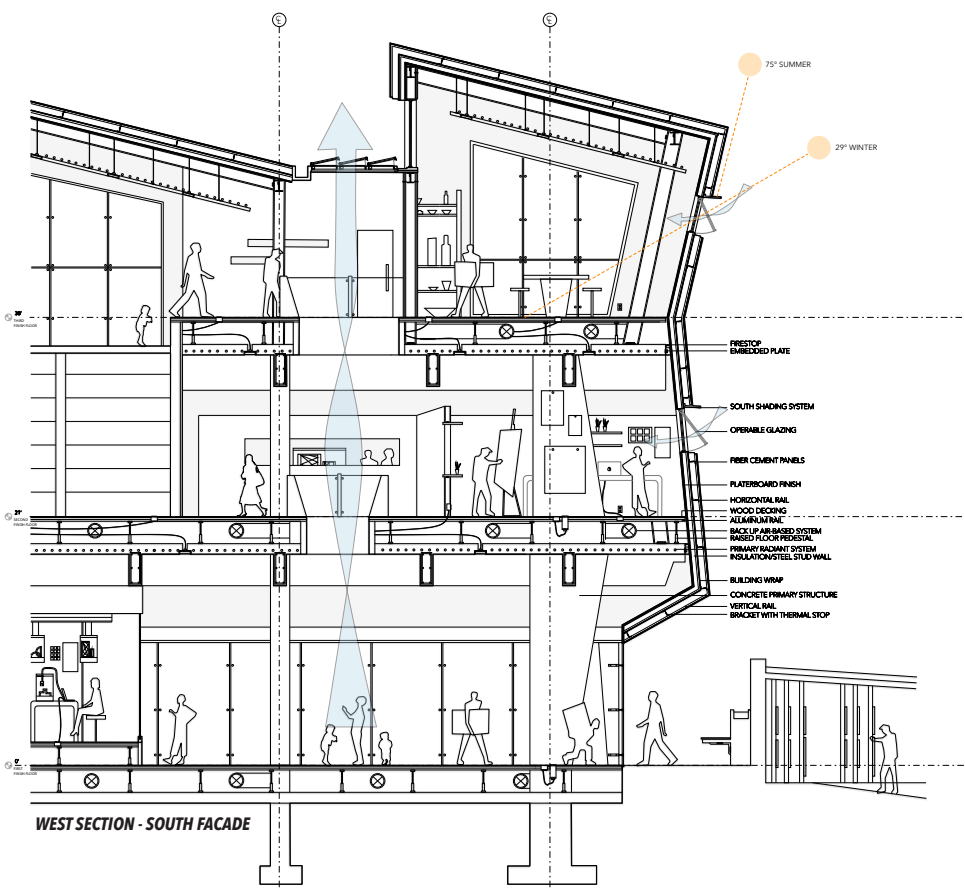
MAIN ENTRIES
Points of entry are based on collecting foot traffic from the bus stop, downtown, and the subway station.



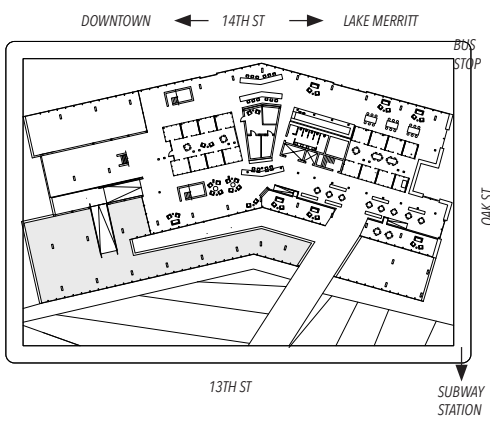
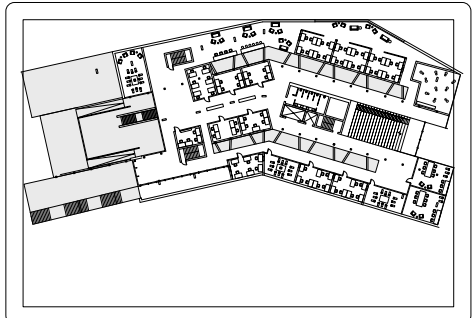
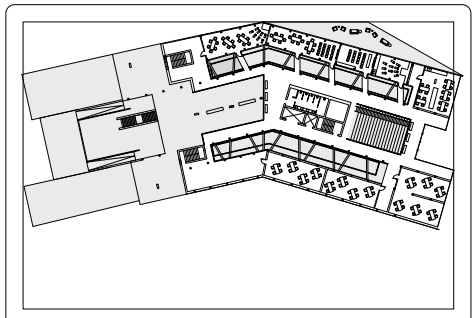
CLIMATE
The saw-tooth roof points towards the north and brings ambient light into the building. The outdoor gathering space is oriented to the south for warmth and sunlight. The building is embedded in the ground on the western side blocking western sun and the primary western wind.



CIRCULATION
Points of entry are based on collecting foot traffic from the bus stop, downtown, and the subway station.

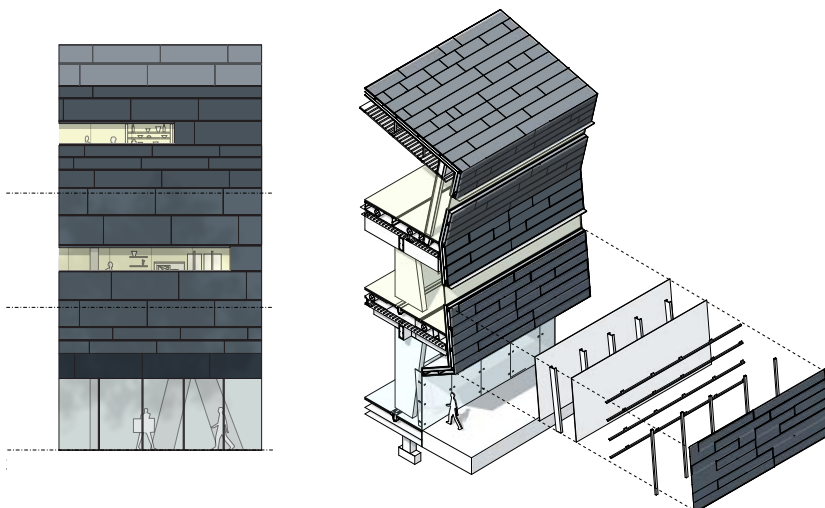
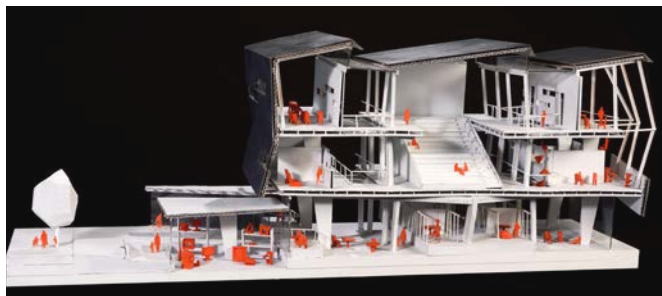


WEST SECTION - SOUTH FACADE



Cross Section by Tess Stilman

WEST SECTION



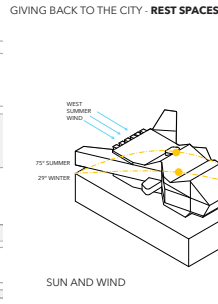
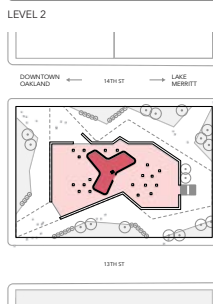
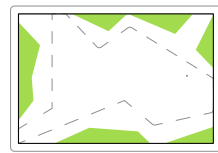
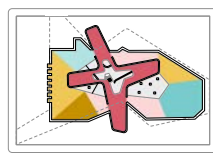
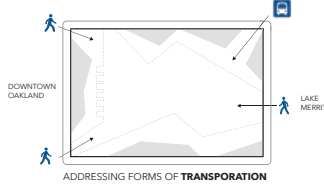
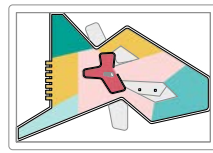
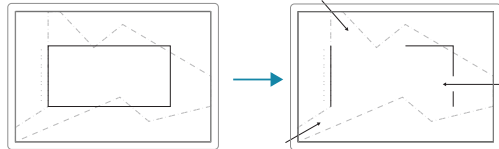
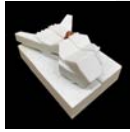
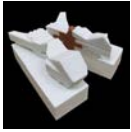
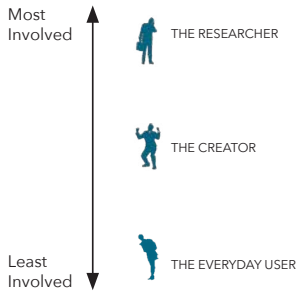
A world where experts are not only exposed to the public, but are able to pass on their skills and knowledge.

A world where the everyone has equal means and access to art and technology and the skills associated with them.



THE NEW WAVE

MAIN CHARACTERS



PROJECT TYPE: Public Library

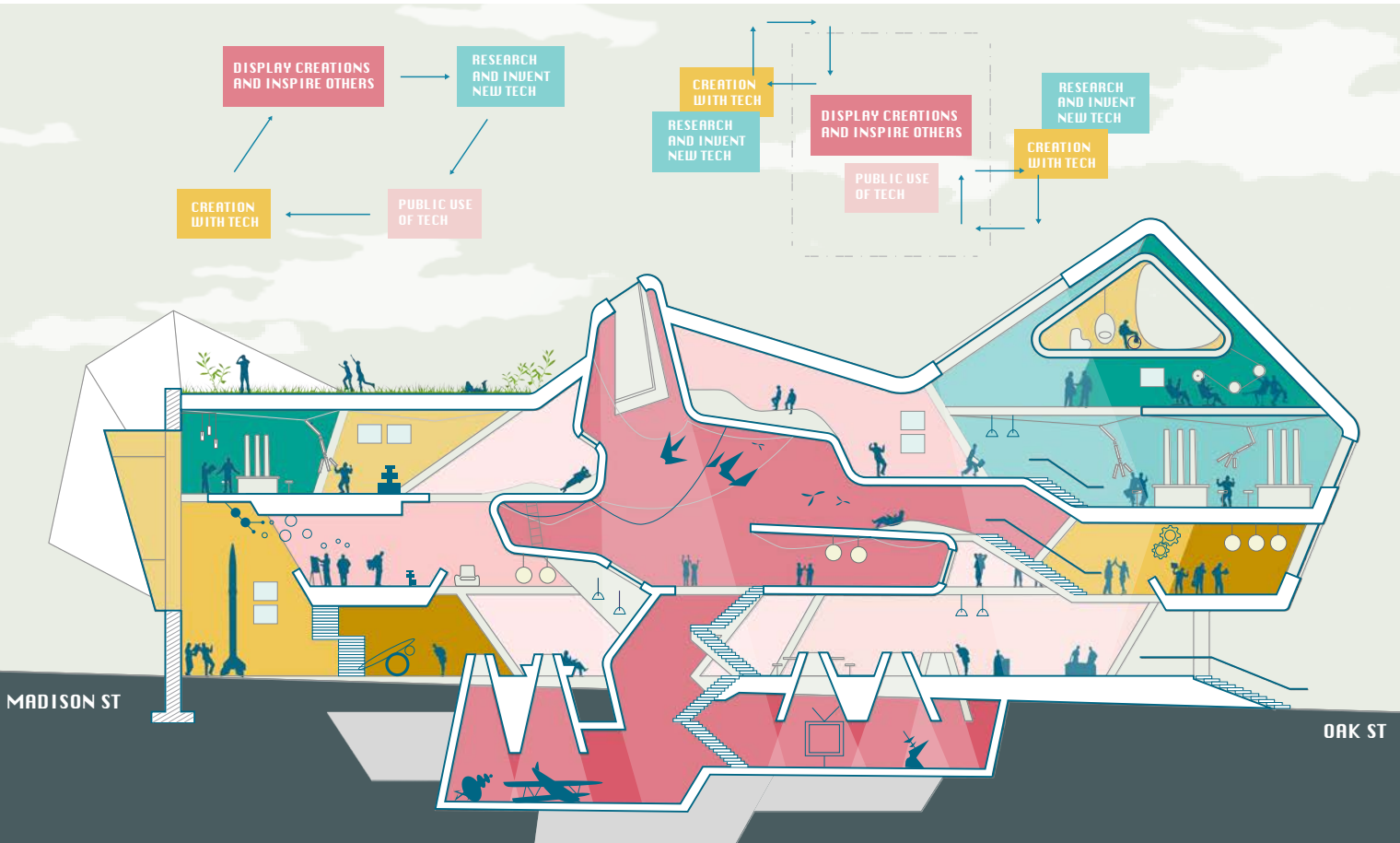
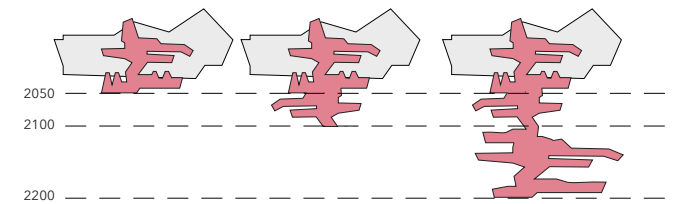
LOCATION: Oakland, CA

WHEN: 3rd Year, Winter 2018

PROFESSOR: Jeff Ponitz

AWARDS/RECOGNITION: Launchpad showcase participant

PROJECT DESCRIPTION: With the creation of more technology, the divides between various economic and social groups grow due to lack of accessibility of these technologies. The goal of the library of the future will be to close the gaps between these groups by providing a space for everyone to access modern technology. In the future, society will be so reliant on technology so much so that if you are not experienced/exposed to it you will fall behind and be unable to actively participate/contribute. will give equal opportunity for all to learn/use/make with technology assuring everyone has the chance to be active participants in society.



A PLAYFUL RETREAT IN AN URBAN SETTING

PROJECT TYPE: Apartment Complex

LOCATION: Downtown Los Angeles

WHEN: 2nd Year, Spring 2017

PROFESSOR: Clare Olsen

PROJECT DESCRIPTION: Downtown Los Angeles is the central business district of Los Angeles, California, as well as a diverse residential neighborhood of some 58,000 people. This urban retreat provides an interactive space with a cafe, farmers market and "tree-walk" for the public as well as 12 housing units for its residents.



