

# THE IN-YARD HOUSE

The In-Yard House provides a solution for the isolated state of the present day suburban home. The house encourages fluid and consistent interaction between family members through its flowing form. It also celebrates the garden by bringing it into the home, eliminating the separation between house and backyard.

The design encourages two connections:

1. Connection between individuals living in the home.
2. Connection of the living space with the garden.

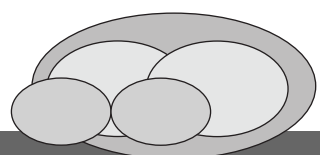
First, through an open floor plan design, members of the home are encouraged to interact with one another. Walls are curved, leading from one space to another with no sudden turns, allowing for natural and fluid circulation. Sleeping and bathing pods are elevated and offset allowing for interaction and visual connection between floors.

Additionally, the house promotes connection with the natural environment. By bringing the backyard into the house, there is a fluid transition between outside and inside. When living in the In-Yard House, nature becomes an integral part of daily life with gardens distributed from your bedroom to the kitchen. Incorporating the garden within the home also lends itself to harvesting food. A food garden by the kitchen would establish a direct connection between cultivation and dining at the dinner table.

In this increasingly fast pace and efficient society, it is important to reconnect with the forgotten values of nature and positive interaction with each other. In doing this, it is also important to reconnect with ideas of why we have what we have and where it all came from.

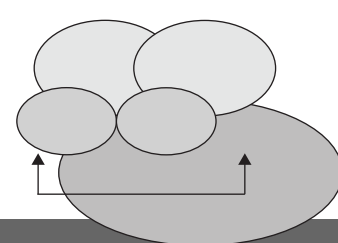
## PROGRAMMING

Two sleeping areas, two bathrooms, and a central living/kitchen space.



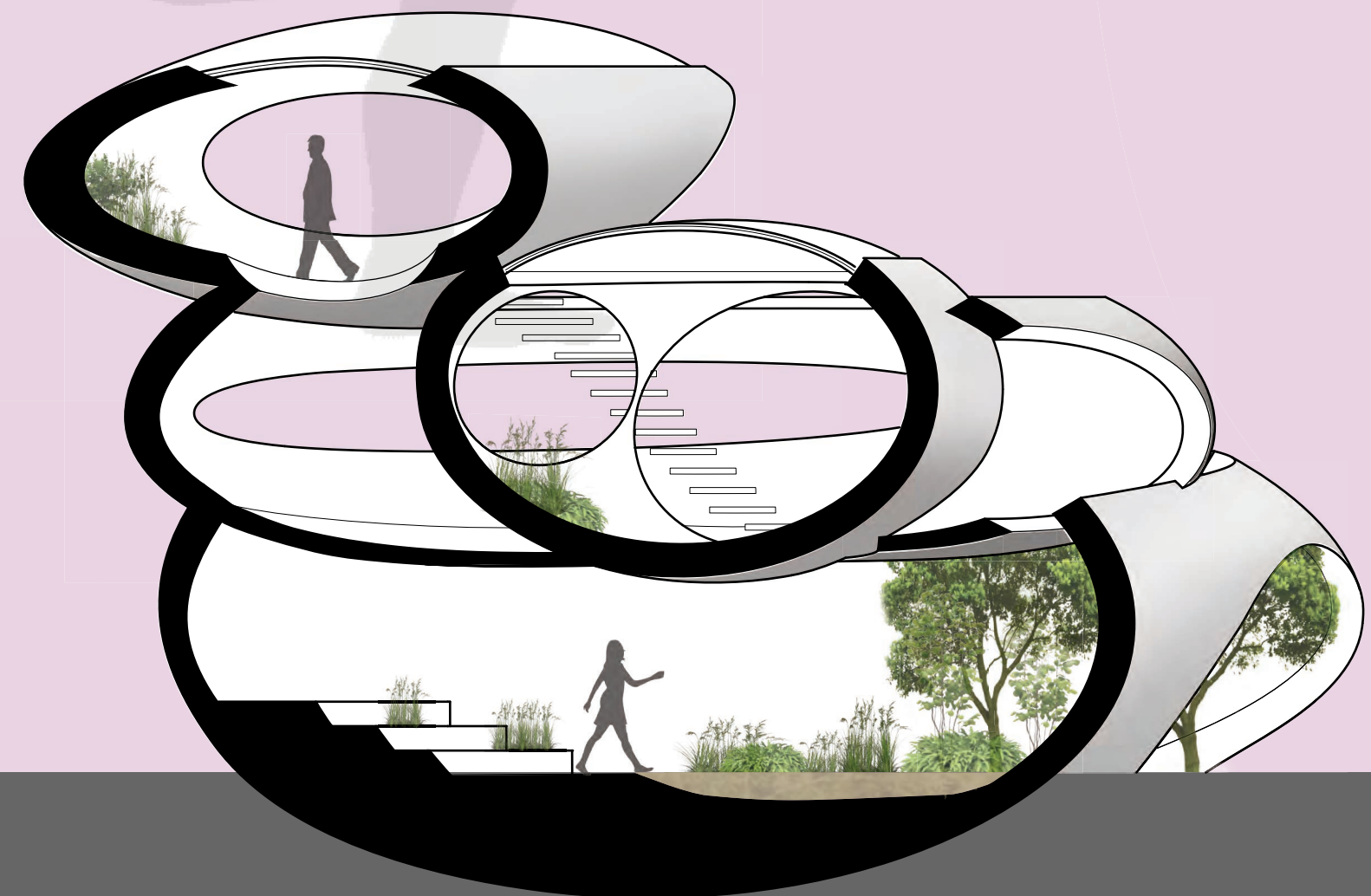
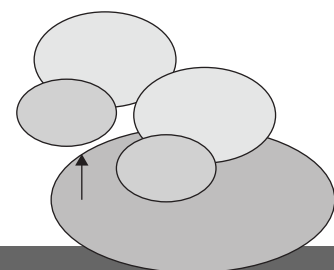
## SEPARATION

To create privacy.

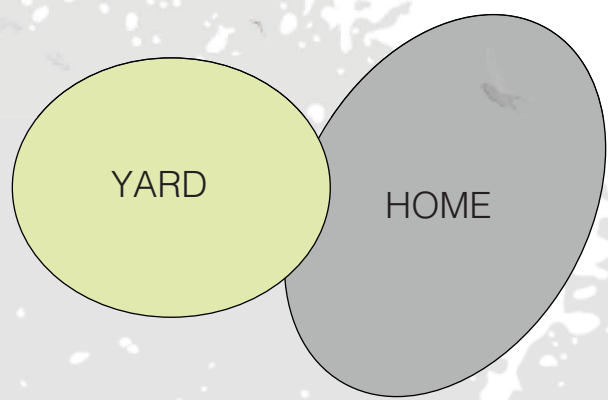


## OFFSET

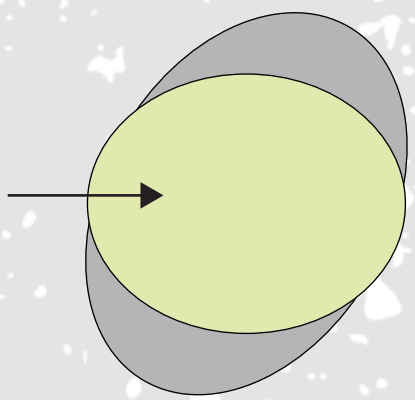
To create visual connection while maintaining privacy.



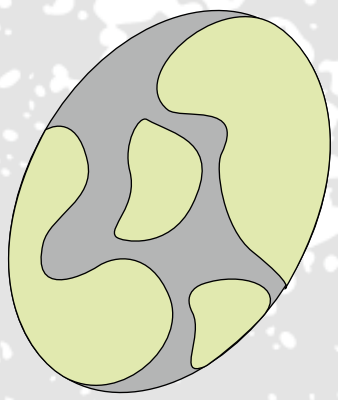




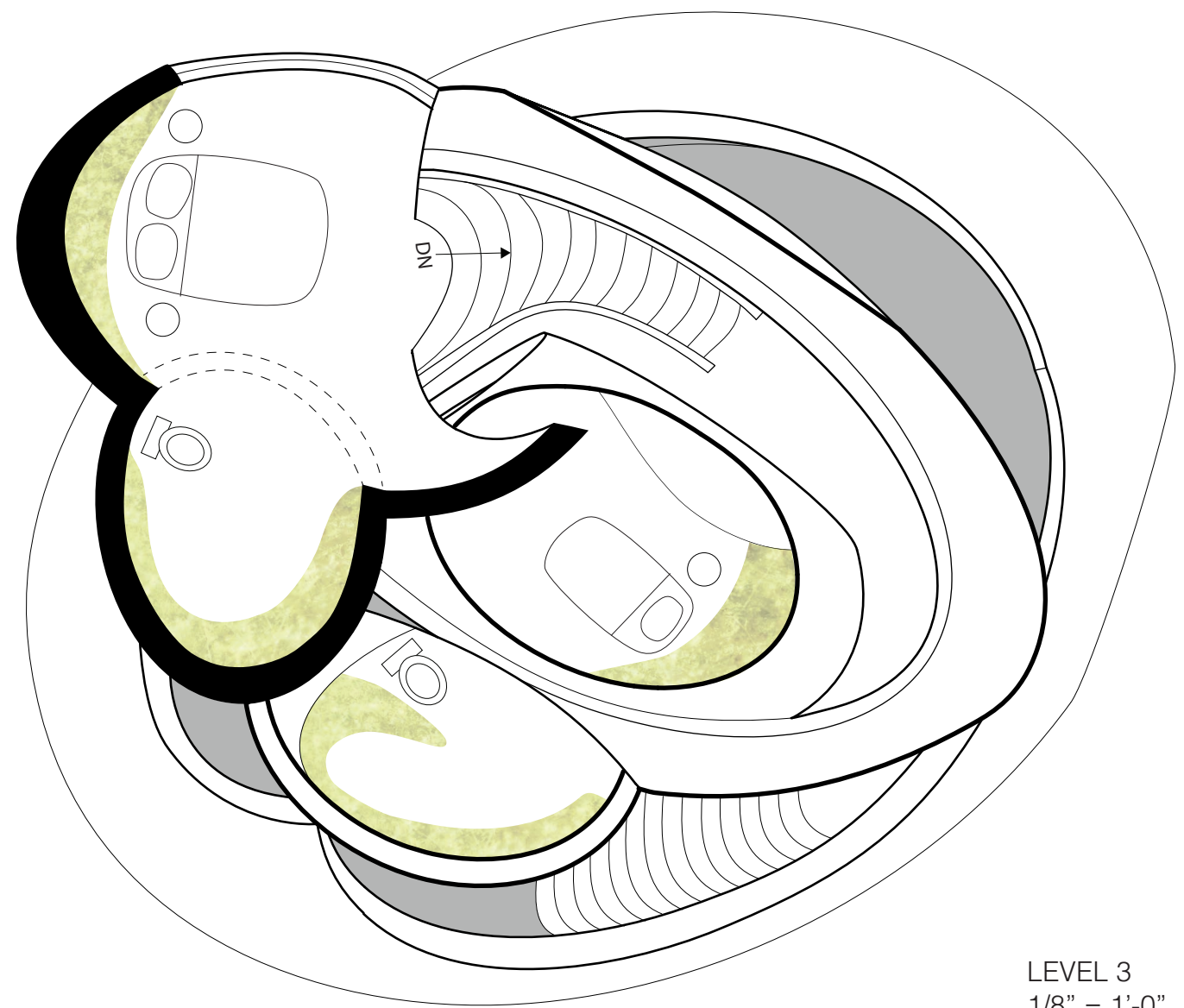
**PRESENT DAY SITUATION**



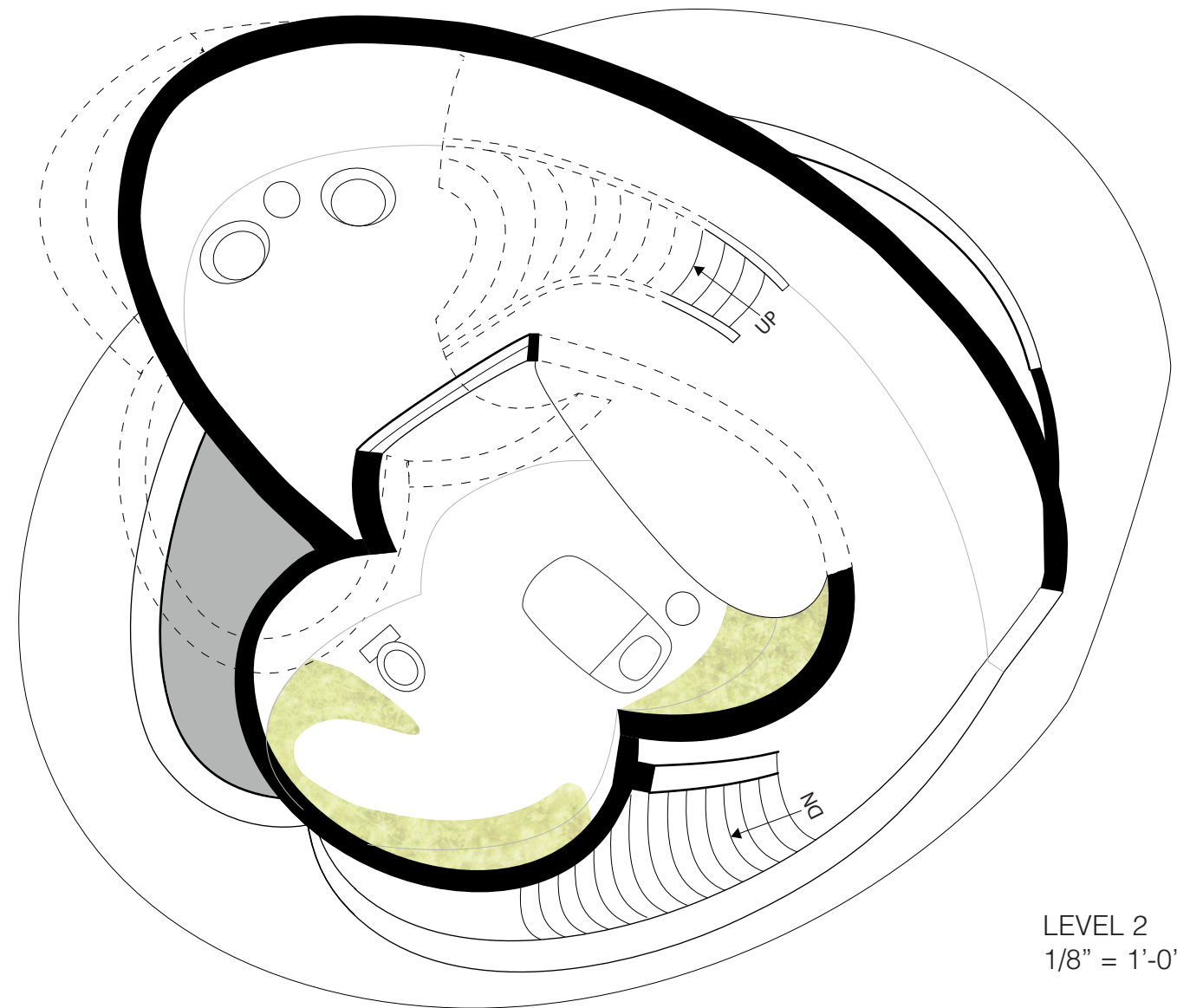
**INTEGRATION**  
The back yard within the home



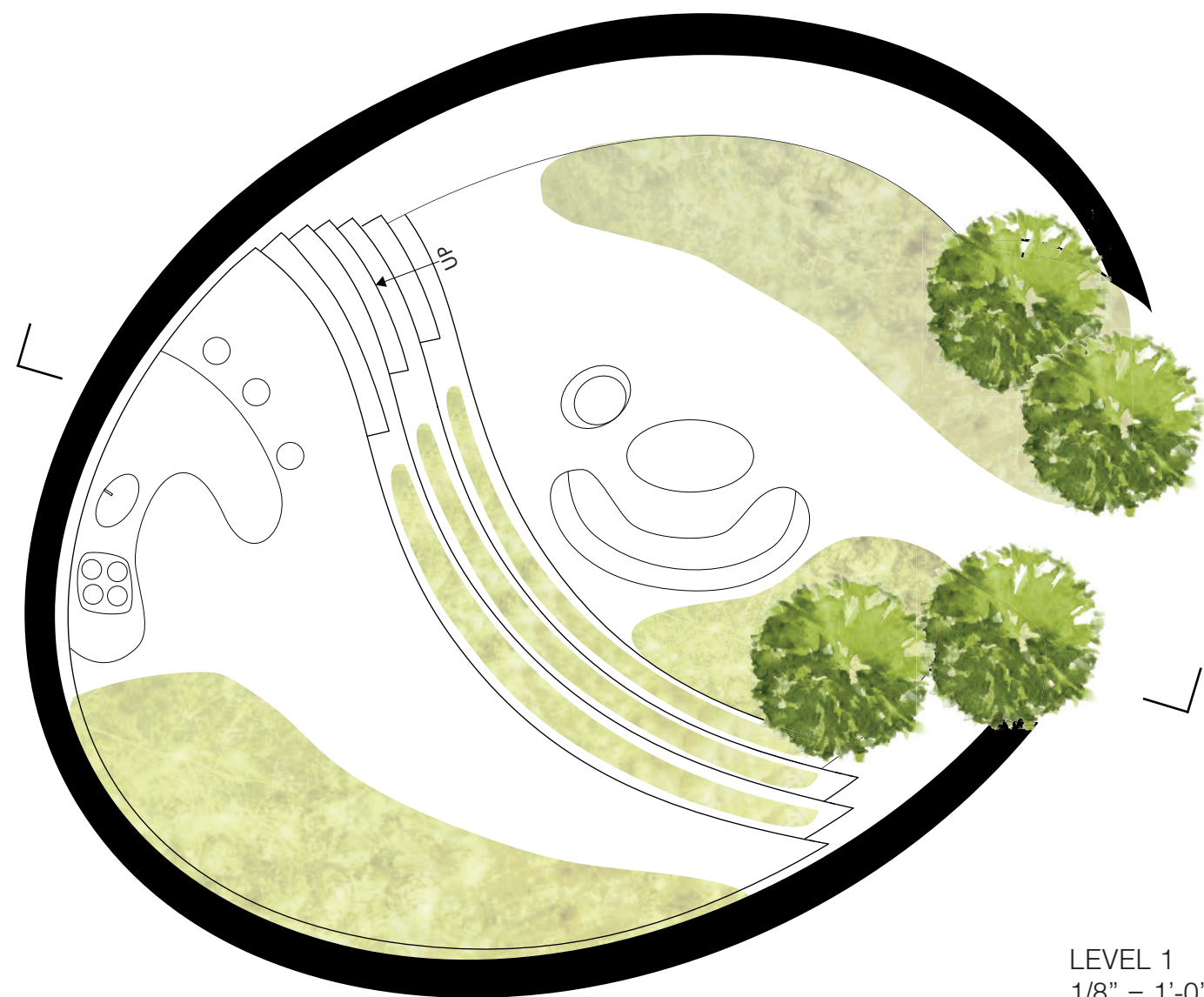
**DISTRIBUTION**  
Garden spaces throughout the home



LEVEL 3  
1/8" = 1'-0"



LEVEL 2  
1/8" = 1'-0"



LEVEL 1  
1/8" = 1'-0"





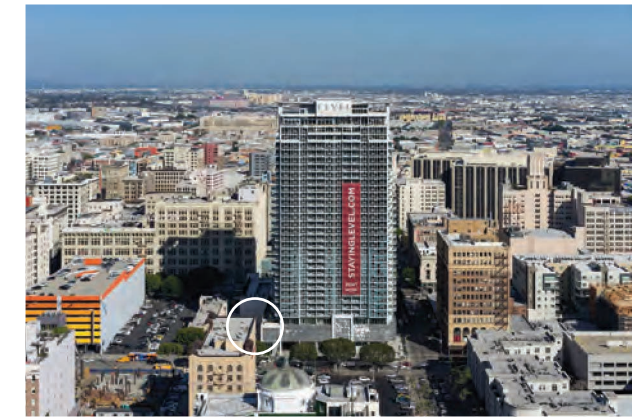


# A PLAYFUL RETREAT IN AN URBAN SETTING



Downtown Los Angeles is the central business district of Los Angeles, California, as well as a diverse residential neighborhood of some 58,000 people. This urban retreat provides an interactive space with a cafe, farmers market and “treewalk” for the public as well as 12 housing units for its residents.

## CONTEXT



## IMPLEMENTING “NATURAL” ELEMENTS

1

### SUN

- “Peanut” module provides housing with ample daylighting
- Punctured lightwells in floorplates allow for daylighting underneath and emulates lighting of a forest canopy
- Glazing
- South oriented public seating area

2

### TREES

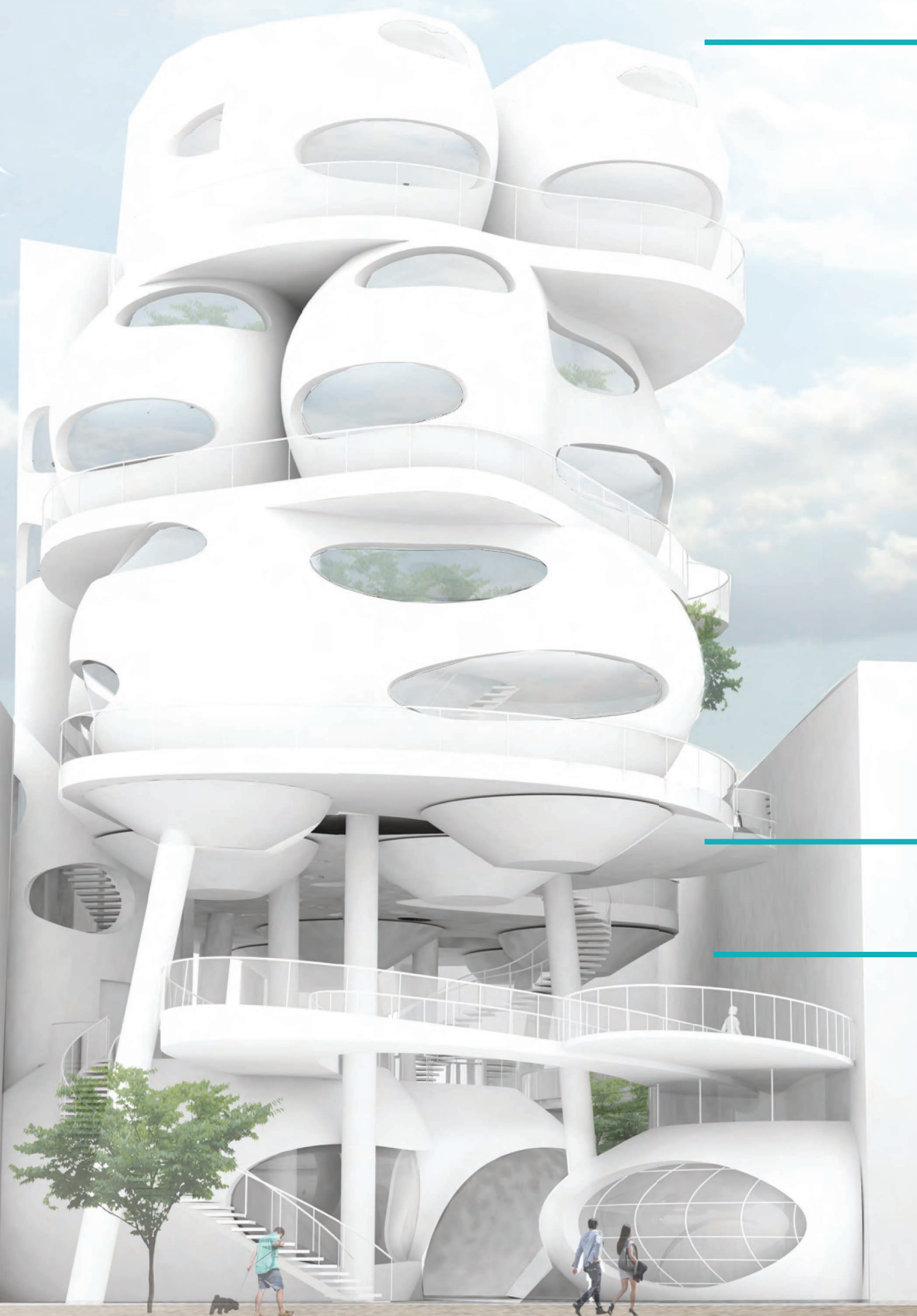
- Form emulates a forest canopy of private residences over the public area
- Planted areas purify the air
- “Treewalk” included for more emphasized interaction with nature

## PRIVATE

- 12 housing units
- Residences are paired and sectioned off with gates for privacy
- Each pair of units has a shared balcony for outdoor seating and enjoyment
- Units are raised above neighboring buildings for daylighting

## PUBLIC

- Street access to cafe and farmers market
- Public seating
- “Treewalk” experience walking through treetops





**GLAZING**  
Double pane Low-E glazing maximizes daylighting while preventing overheating

**PUNCTURED LIGHT WELLS**  
Allow for light to penetrate through the floor plates and emulate the shading effects of a tree canopy

**OPEN FLOOR PLAN INTERIORS**  
Promote natural cross ventilation

**PRECAST CONCRETE MODULES**  
Concrete mix with glass fibers for insulation and metal fibers for structural reinforcement with xypex admix for waterproofing.

**OPERABLE WINDOWS**  
Allow for ventilation and personalized comfort

**"PEANUT" SHAPED UNITS**  
Allow for maximized daylighting for individual units

**INDOOR PLANTED AREAS**  
Plants can purify the air or provide fresh produce to homeowners

**REINFORCED CONCRETE FLOOR PLATES**  
Support each floor and transfer loads on to reinforced concrete columns

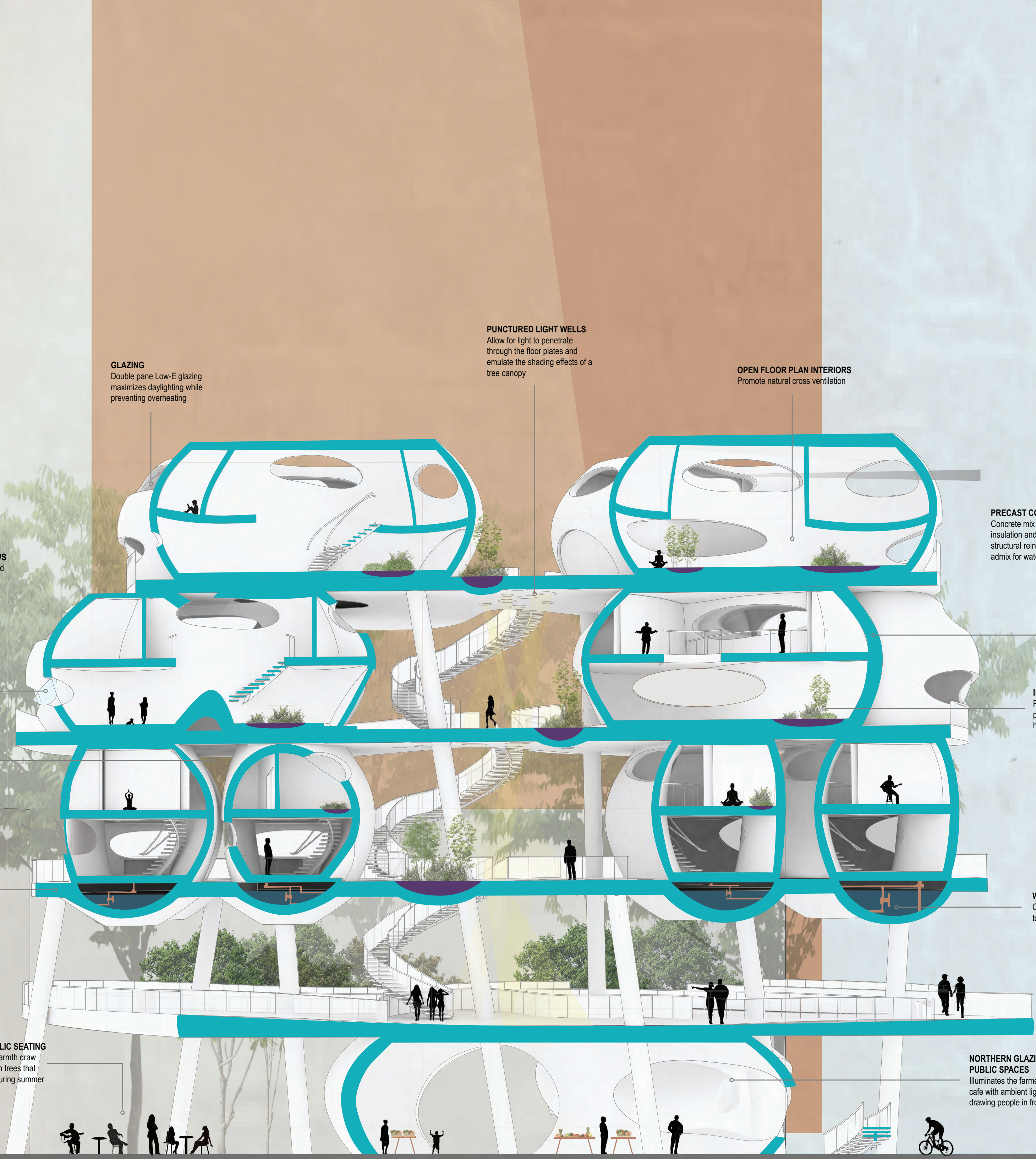
**WATER COLLECTION PODS**  
Collect stormwater and distribute it to planted areas

**SOUTHERN PUBLIC SEATING**  
Daylighting and warmth draw visitors to stay with trees that provide shading during summer

**NORTHERN GLAZING FOR PUBLIC SPACES**  
Illuminates the farmer's market and cafe with ambient lighting while drawing people in from the street

**SOUTH**

**NORTH**











PUBLIC SEATING - Behind the cafe and farmer's market

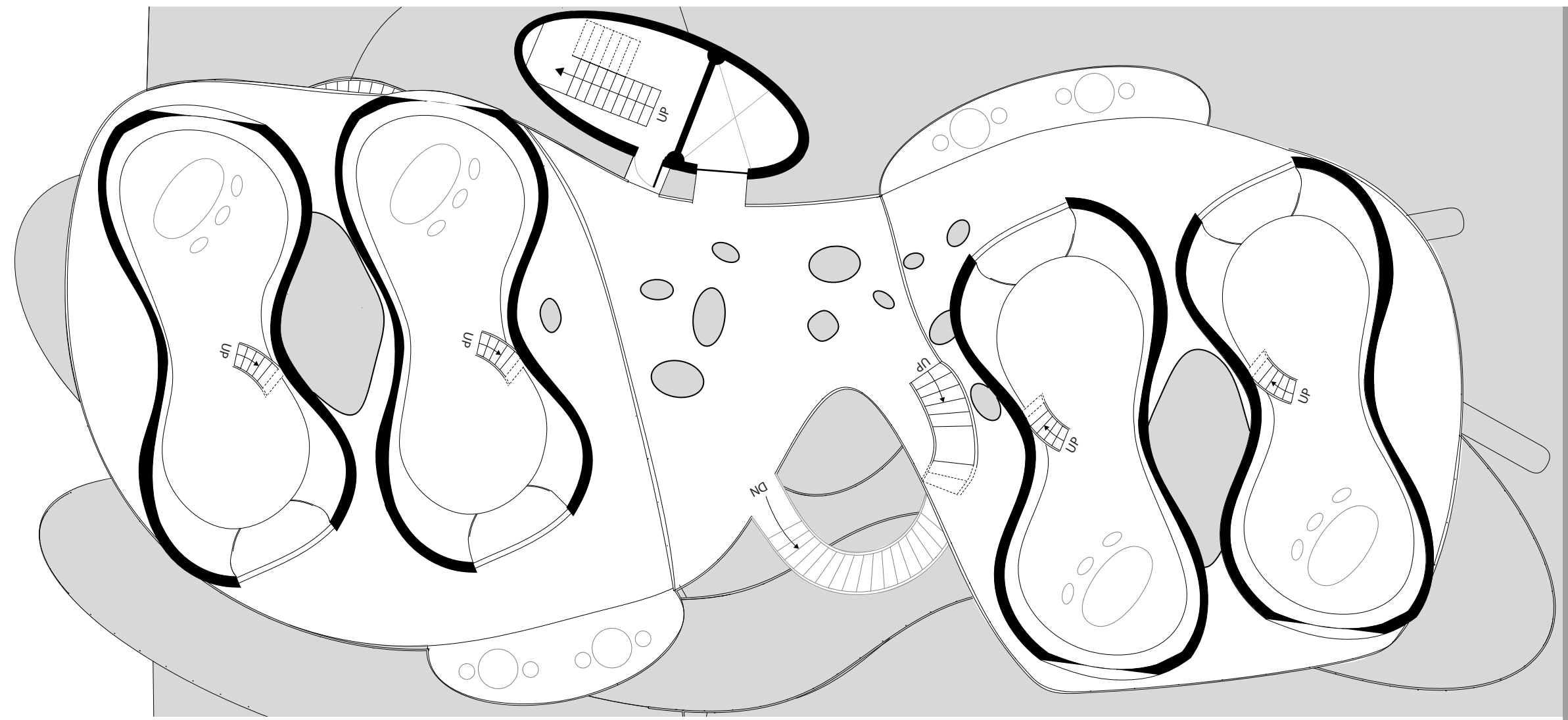
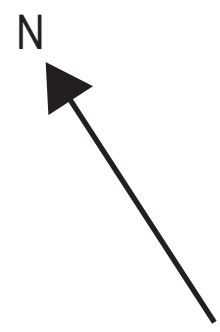


TREEWALK - SE Facing

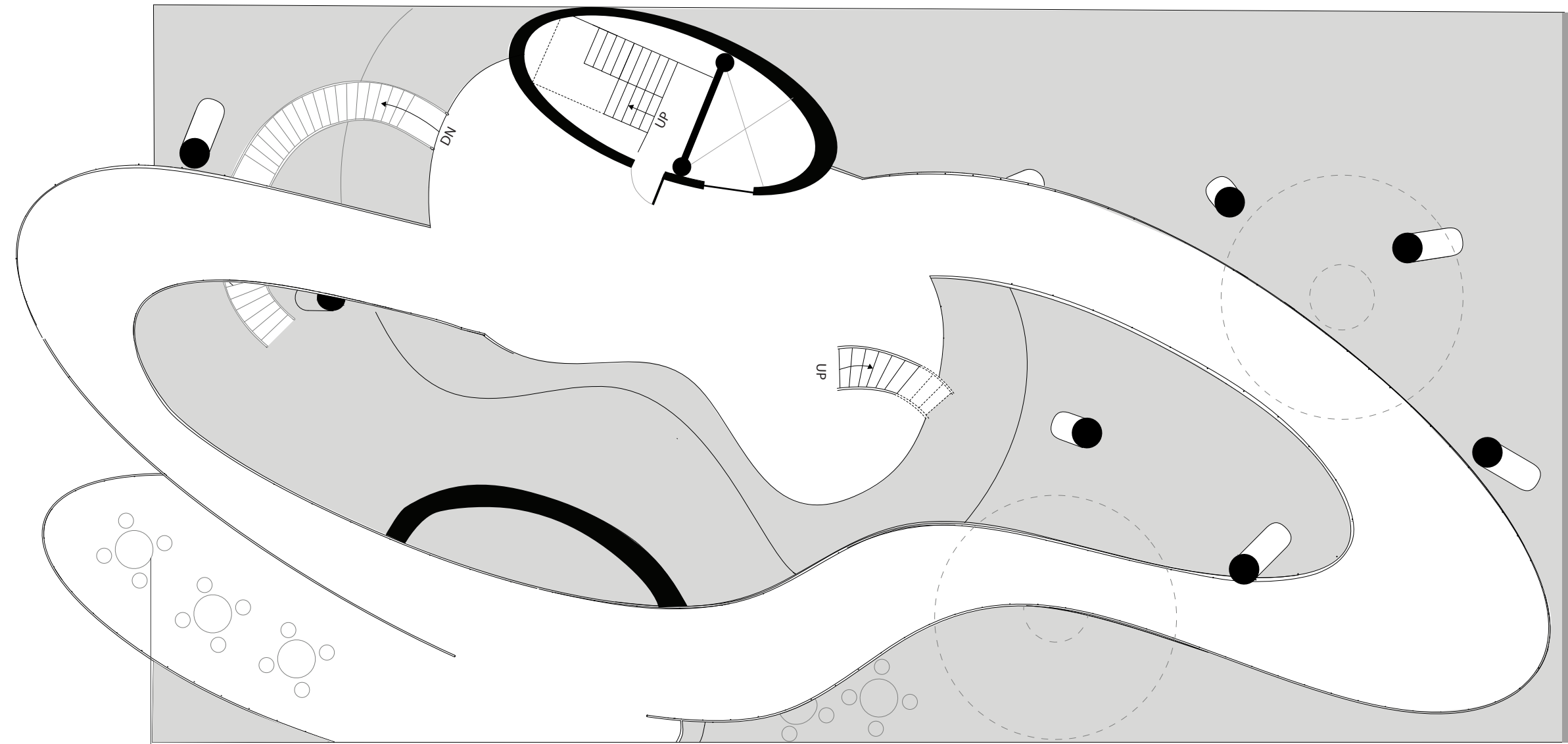


TREEWALK - NW Facing



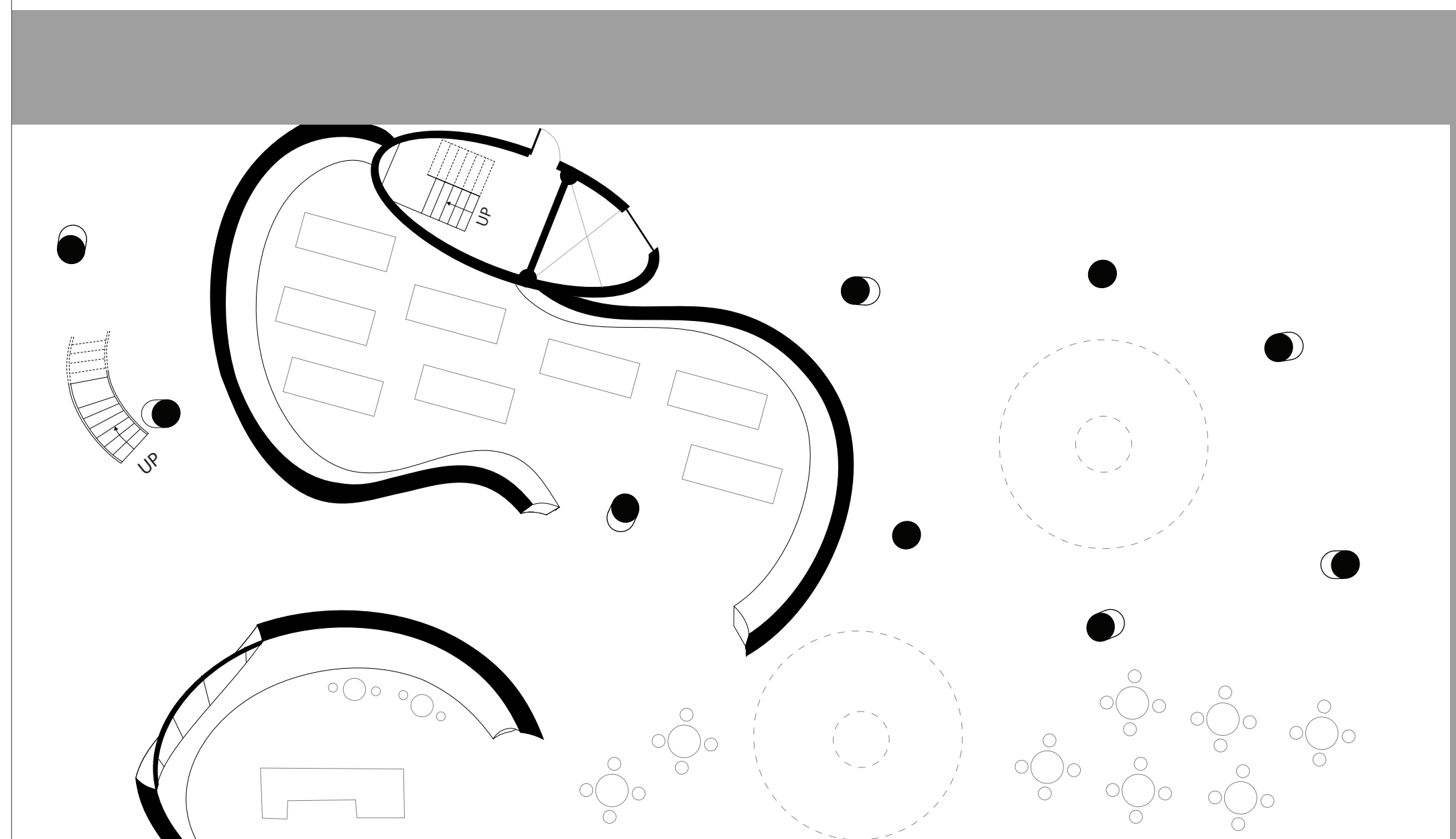


LEVEL 3 - 1ST UNIT LEVEL



LEVEL 2 - "TREETWALK"

OLIVE ST

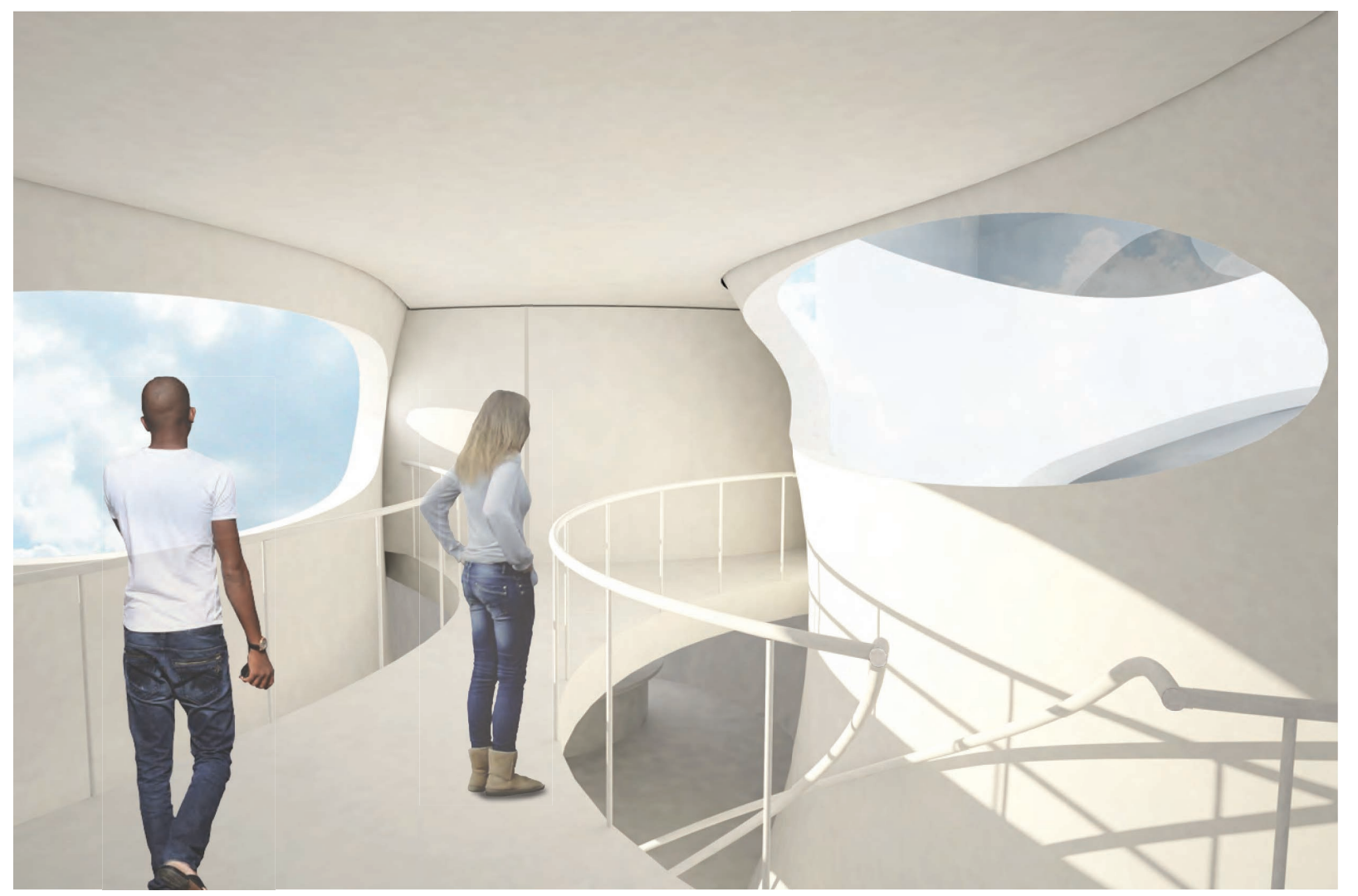


LEVEL 1 - FARMERS MARKET AND CAFE





UNIT INTERIOR - 1st Floor



UNIT INTERIOR - 2nd Floor





HOUSING OF THE FUTURE



SINGLE HOUSING UNIT

