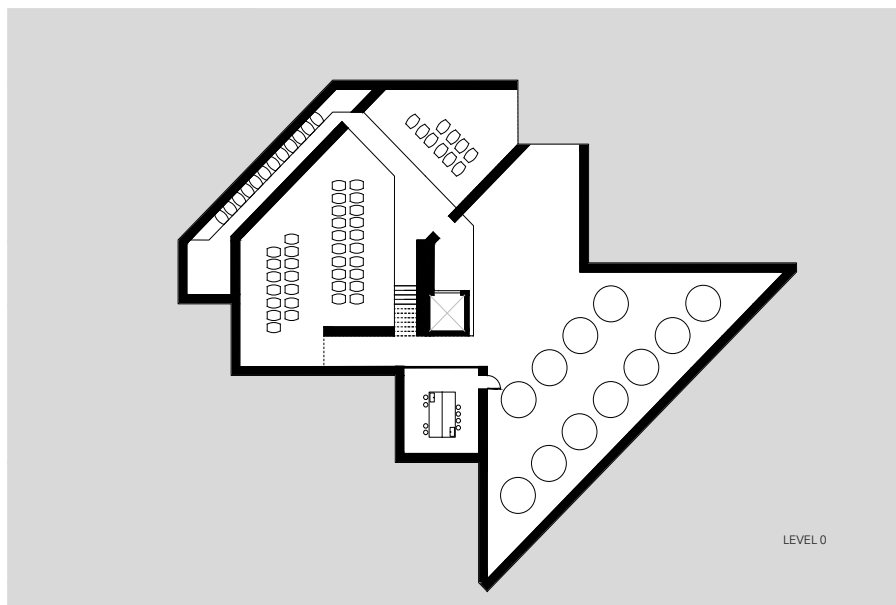
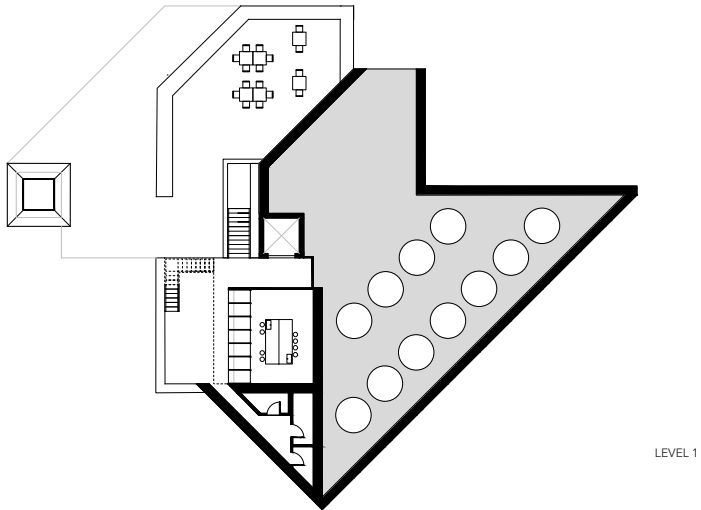
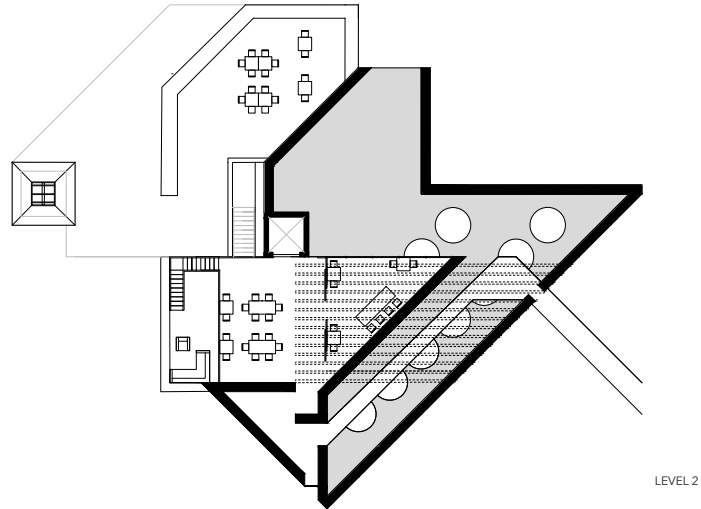


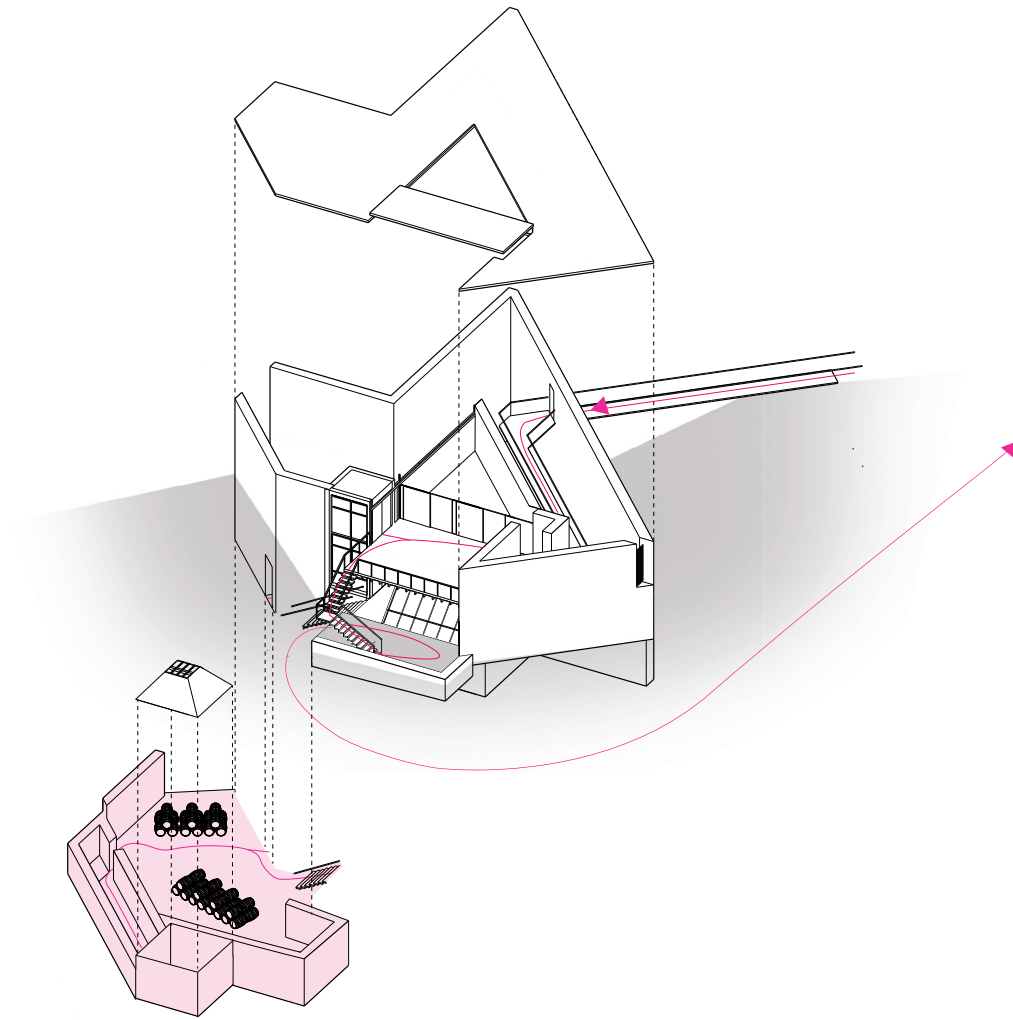
Nicole Sarwono

ARCH 252 | Winter 2017

This winery, formed from a simple system of grids, prompts moments of curiosity and anticipation of program elements that guide users through a storybook-like progression of spaces. This story begins with a human-scale portal inviting the visitor to approach the mysterious façade, followed by the rising action where the visitor is suspended along a bridge above the fermentation tanks with suggestions of what lies ahead. Then a turning point in the building form indicates a change in environment, continuing until arrival in the tasting area. Within the tasting area a view of the vines, the laboratory, and fermentation facility is revealed.

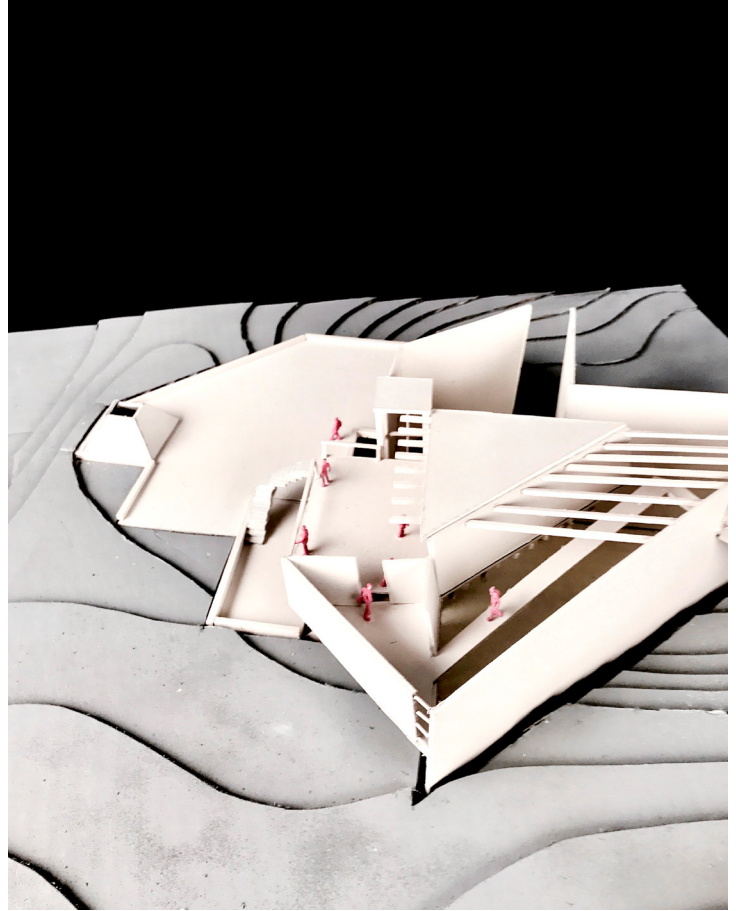
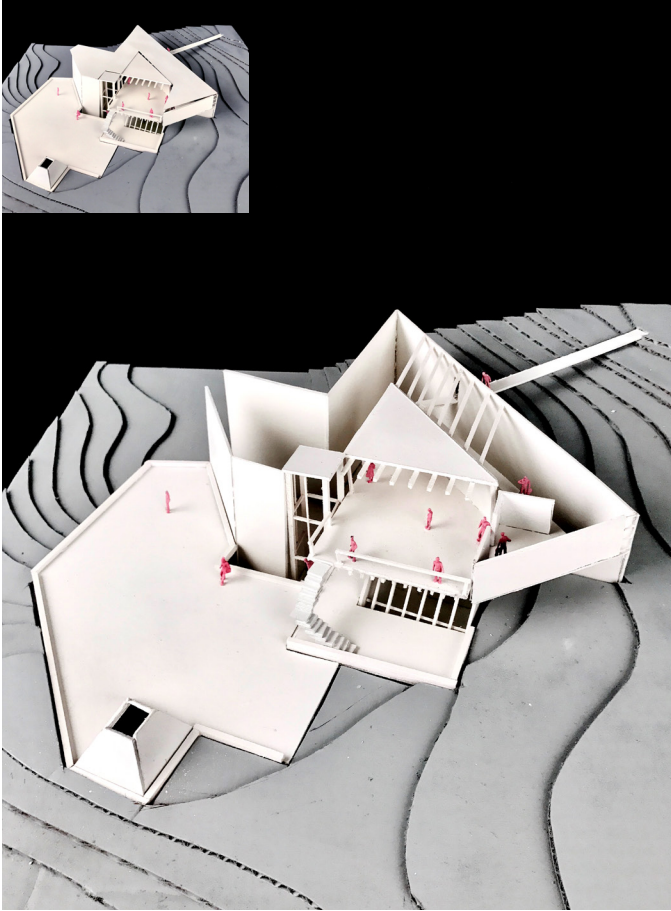


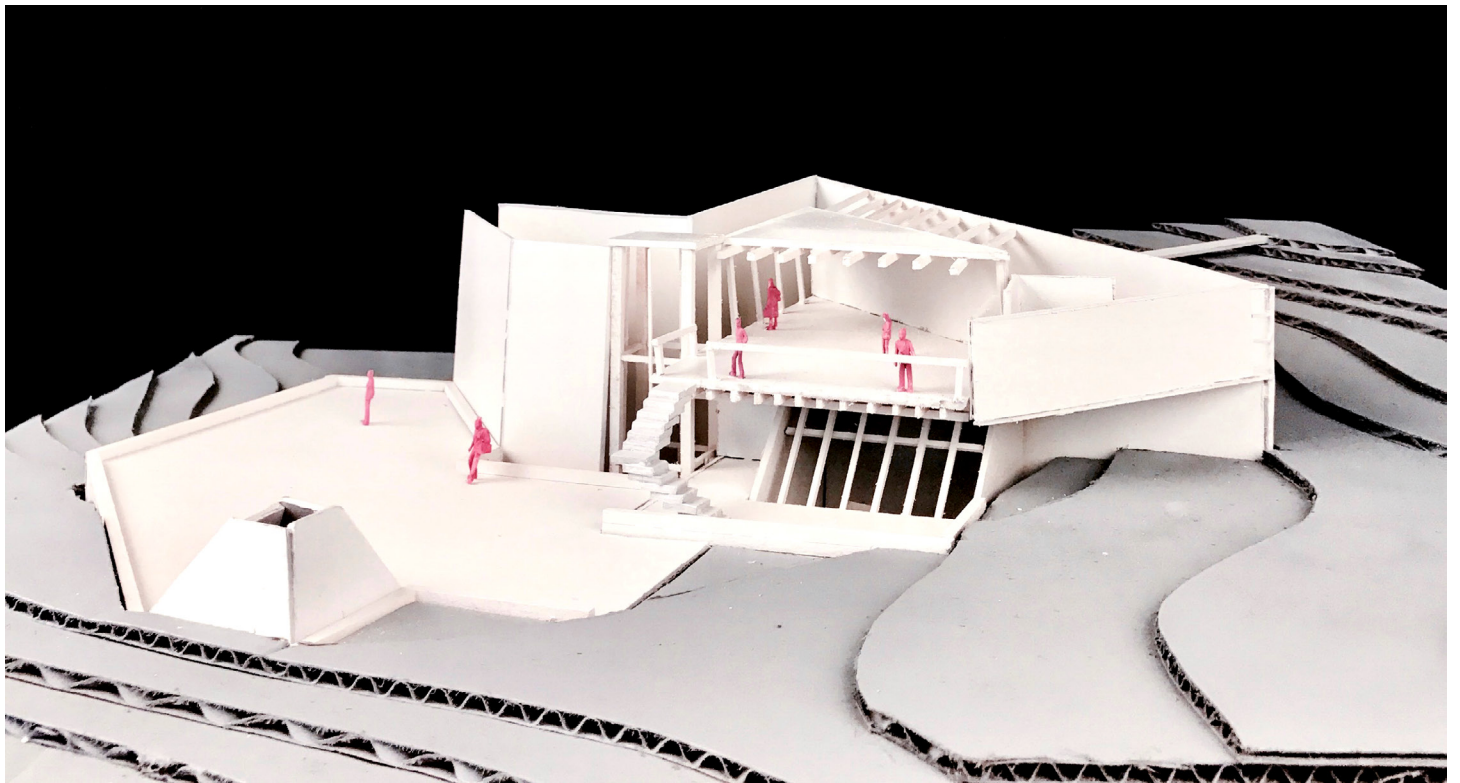
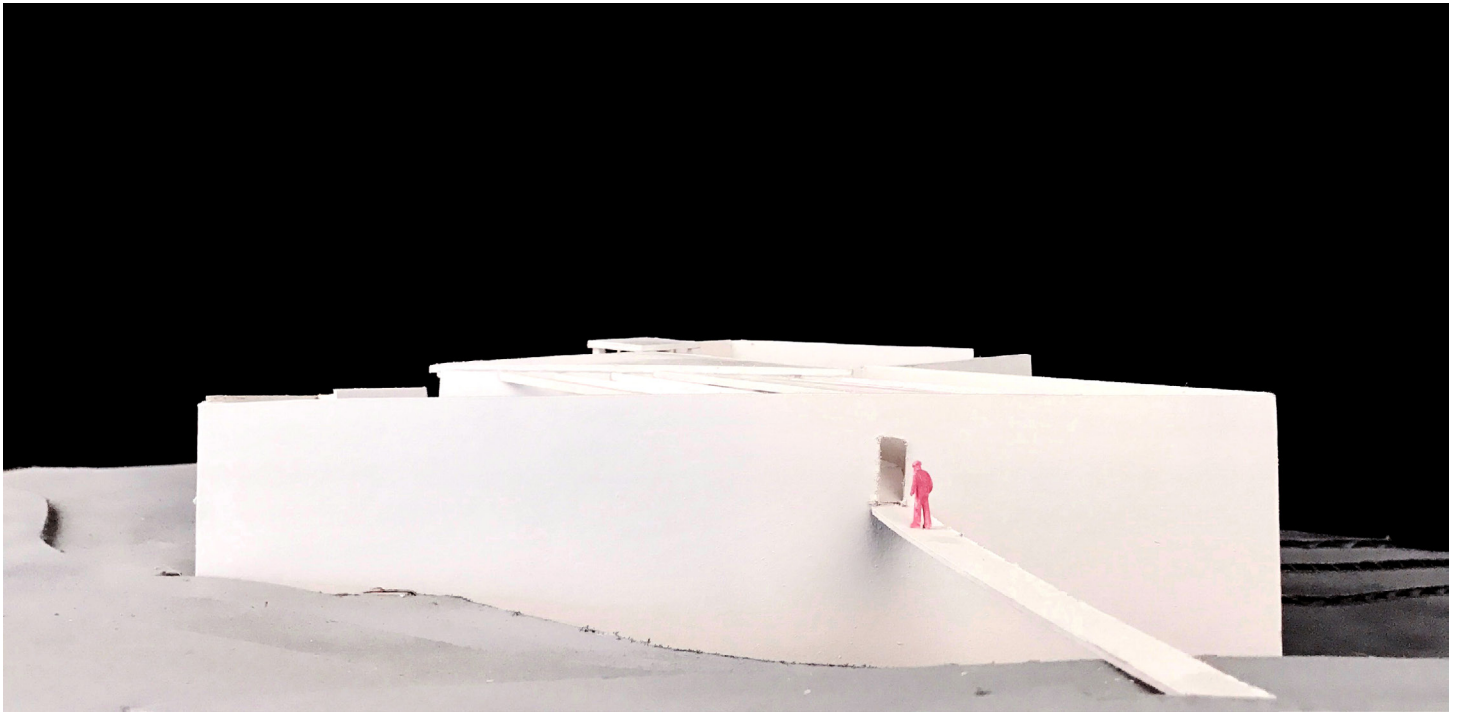


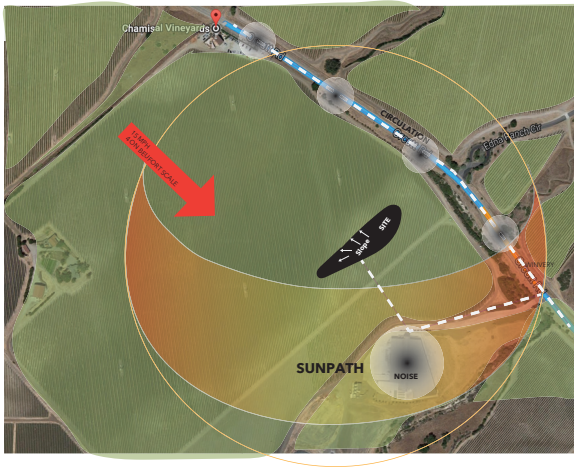


TRANSFORMABLE MODEL

Designing the model with a removable roof allows understanding of the interior spatial conditions.







LOCATION: Chamisal Winery -
Edna Valley, CA

PROGRAM:

Tasting Room

Restrooms

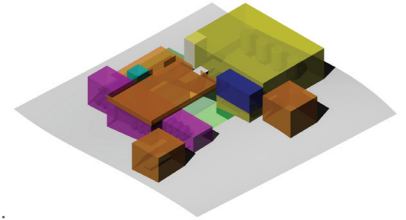
Barrel Storage

Tank Room

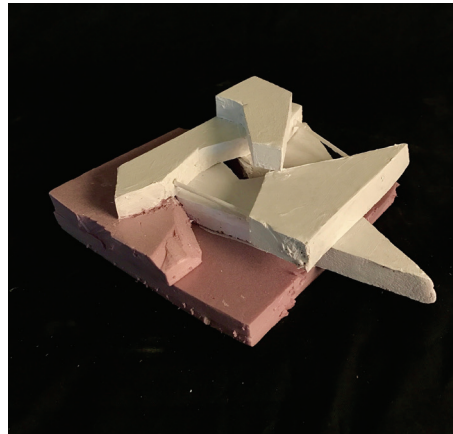
Laboratory

Exterior Lounge

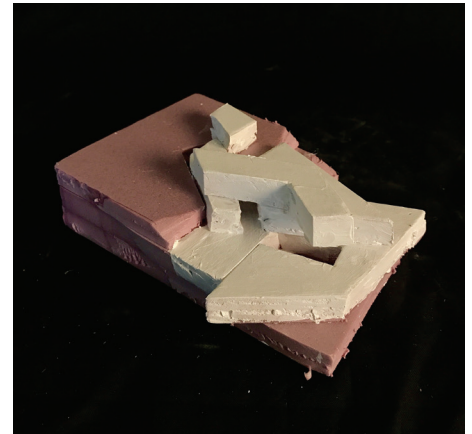
Parking/Accessible Parking



THE BRIDGE BETWEEN



CIRCULATE



INTERTWINED/OVERLAPPED

INITIAL MASSING MODELS

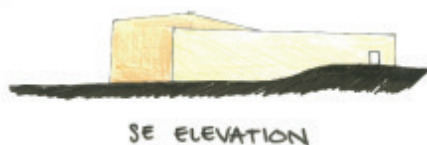
Experimenting with simple gestures to represent an overarching concept.

USER EXPERIENCE

Thinking about how visitors would feel at each point of the project the helped the design move forward.



SECTION



SE ELEVATION

SENSE OF ENTRY

THRESHOLD //
ANTICIPATION

PRODUCTION //
UNDERSTANDING

TASTING //
DESTINATION

ABRUPT TRANSITION //
NOTICE CHANGE
(BY INSINUATING MATERIAL EXPERIENCE.)

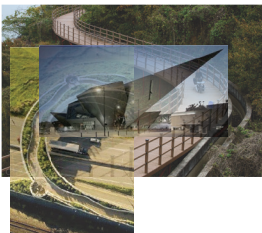
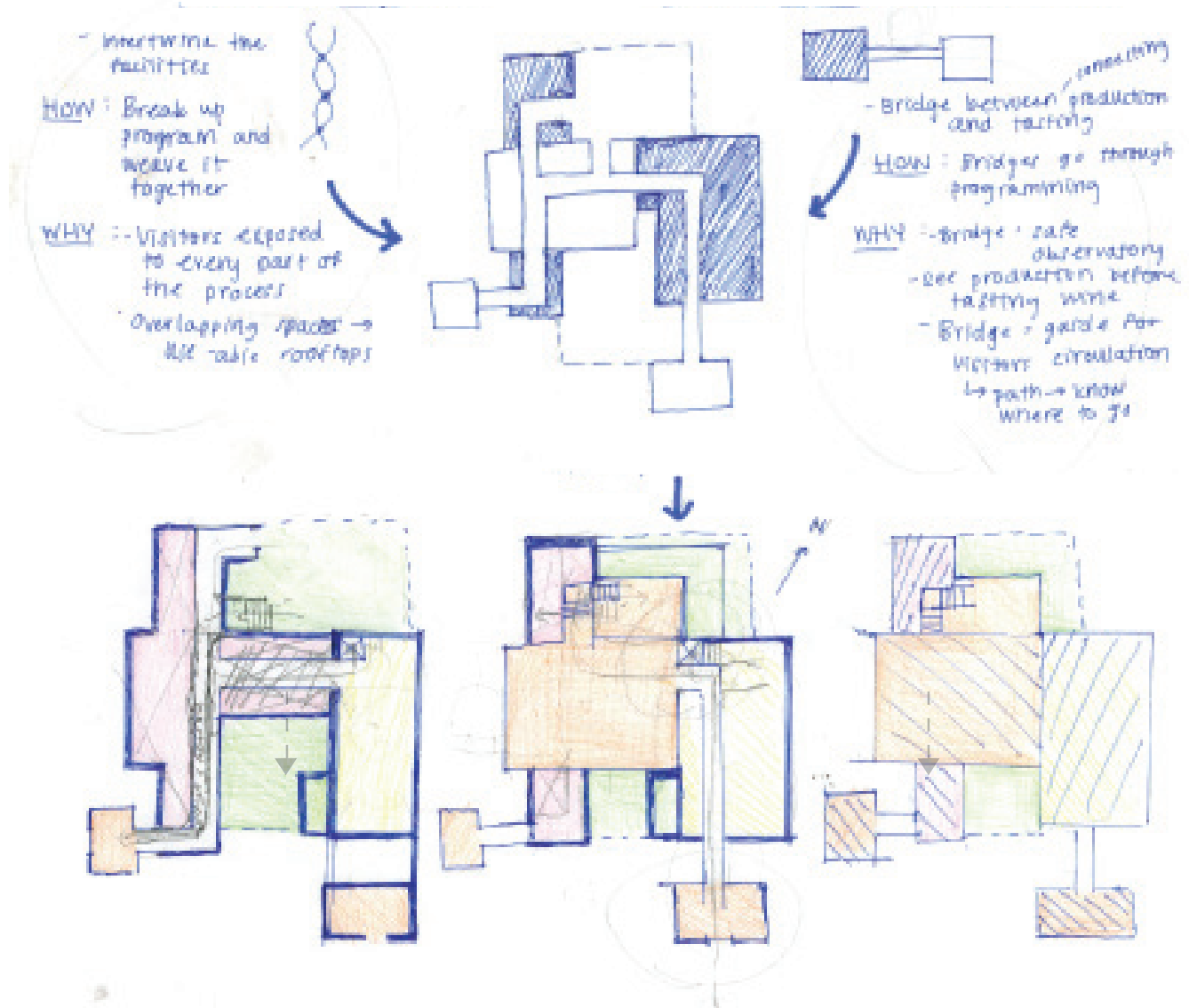
USER EXPERIENCE PART 2

It was important to think about how I wanted the visitor to feel entering the building and how it could be executed through architectural design.

OBJECTIVES

INTERTWINED/OVERLAPPED

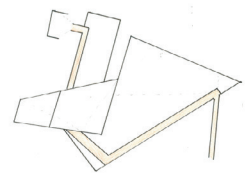
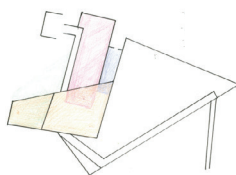
THE BRIDGE BETWEEN

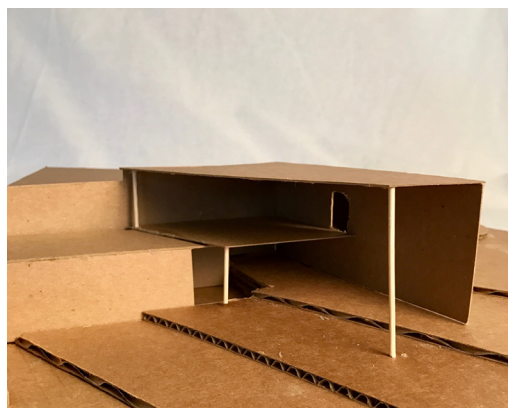
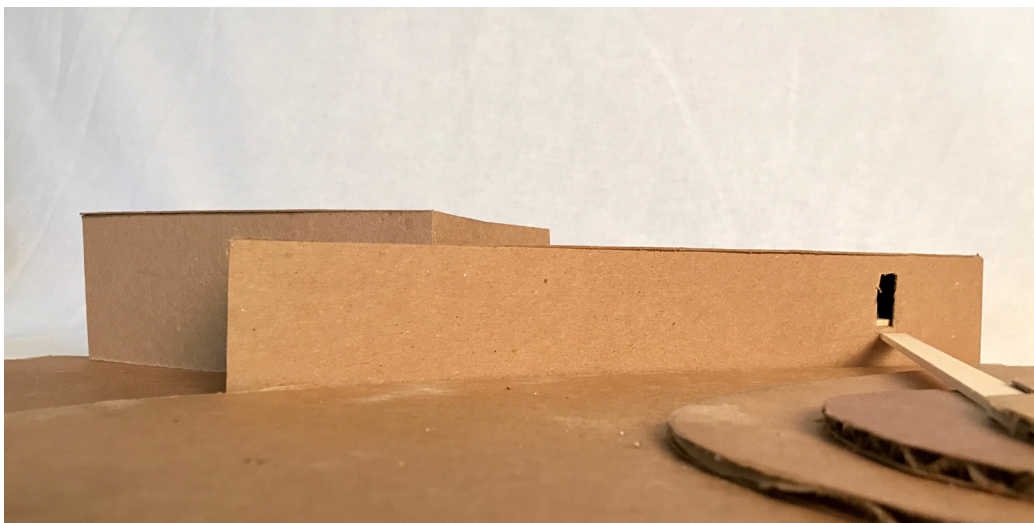
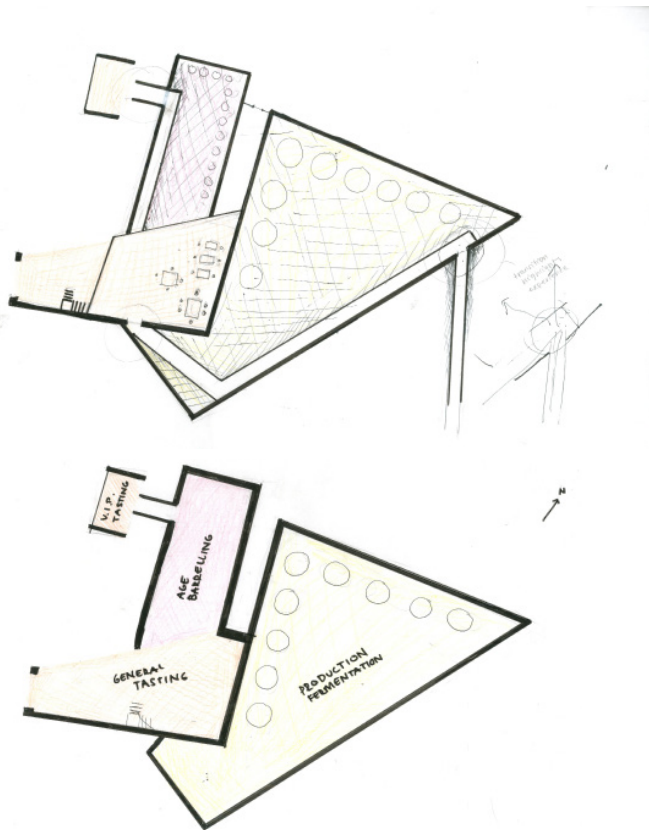


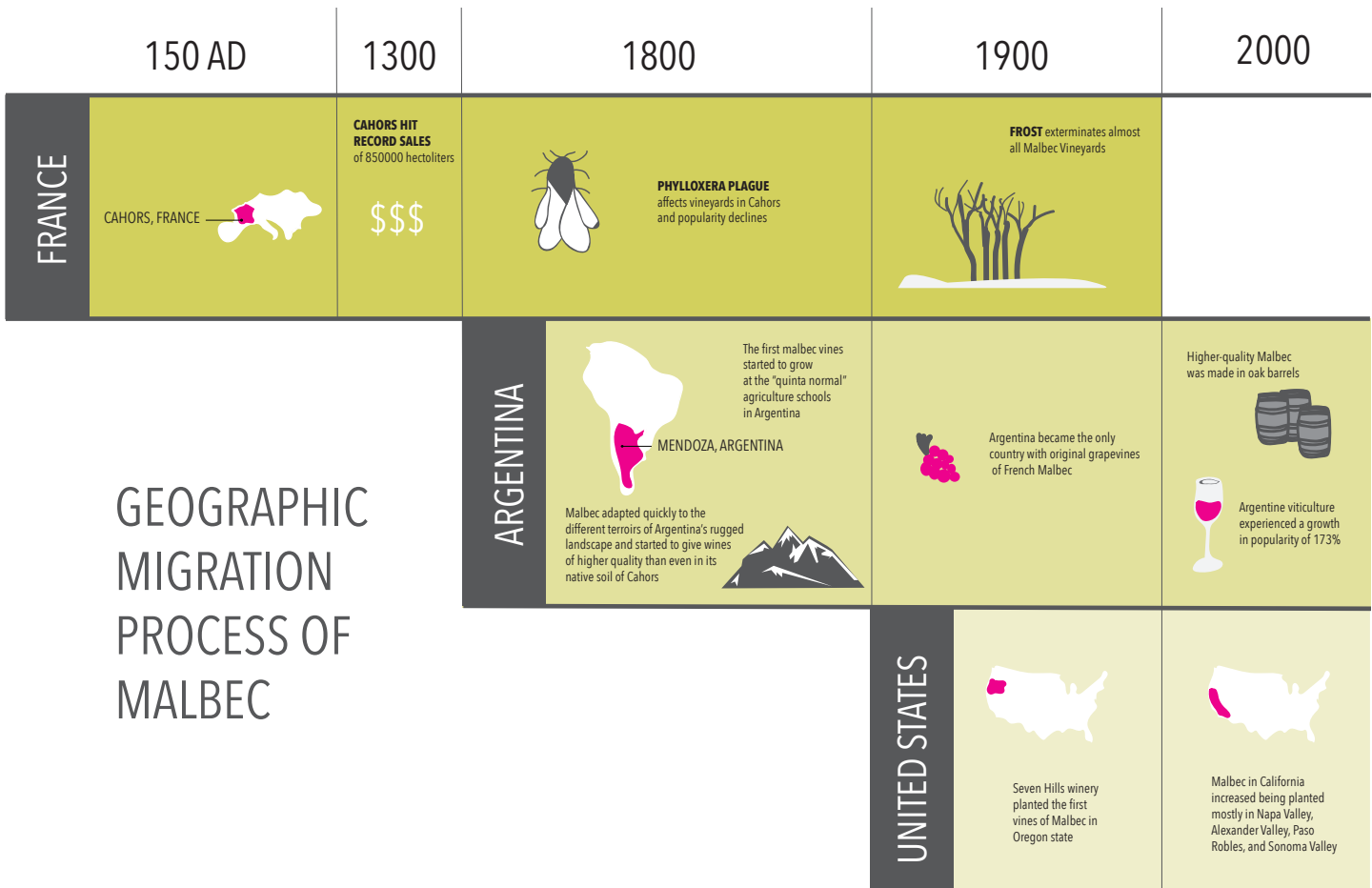
SENSORY STIMULATION



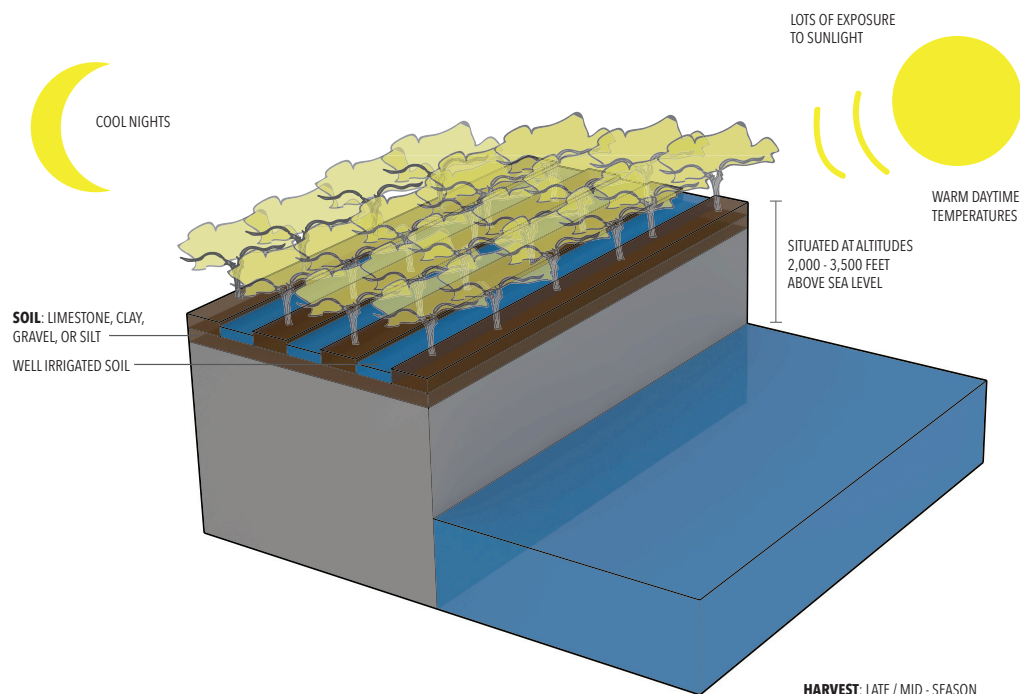
ANTICIPATION AND SURPRISE







GEOGRAPHIC MIGRATION PROCESS OF MALBEC

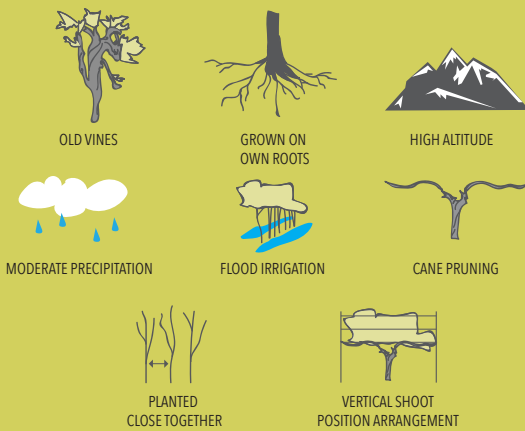


LANDSCAPE CONDITIONS FOR GROWING MALBEC

GENERAL CHARACTERISTICS OF MALBEC GROWN IN PROPER CONDITIONS

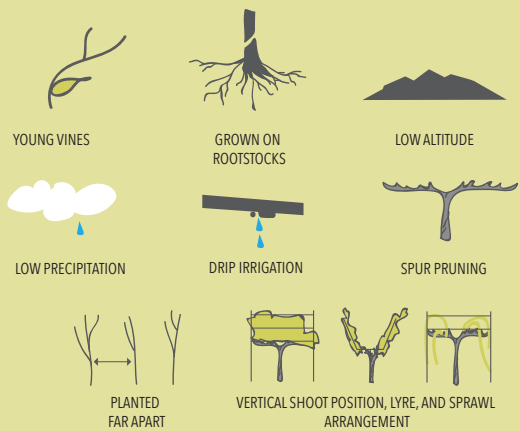
- 1. Color:** dark inky purple
- 2. The tannin:** very prominent when the grapes get to fully ripen
- 3. Plum and raisin** notes
- 4. Floral notes** of violet
- 5. Earthy** flavor

MENDOZA, ARGENTINA



RESULT: High TA, ethanol, and VA
Low pH
Red fruit aroma, bitter taste

CALIFORNIA, UNITED STATES



RESULT: Low TA, ethanol, and VA
High pH
Earthy aroma, sour taste

ENVIRONMENTAL IMPACTS ON GROWING MALBEC

Leonardo Fibonacci

- Born in Pisa
- Lived roughly around 1170-1240
- An Italian Mathematician
- Traveled to various nations
- Liber Abaci, 1202
- contains a thought experiment



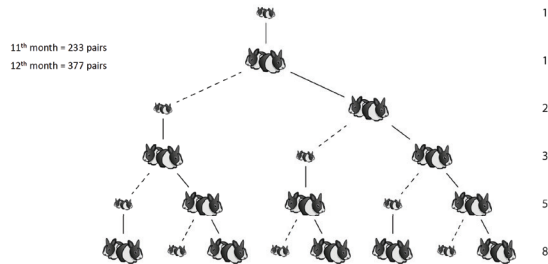
GEOMETRIC DALLIANCE

This quarter, we focused on utilizing meaningful and accurate geometry in architectural design. With the advanced technology of today, it is easy to get carried away with overusing the technology's geometric capabilities, creating geometry that is, in a way, "random". As a class, we researched various geometric dalliances which we would use in our designs.

FIBONACCI SPIRAL

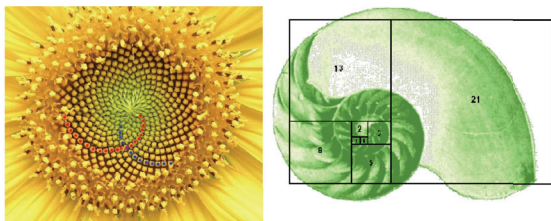
My group and I were assigned to study the fibonacci spiral. We learned its history, how to hand draw it, and how to digitally draw it.

How many pairs of rabbits would one pair provide? assuming none died

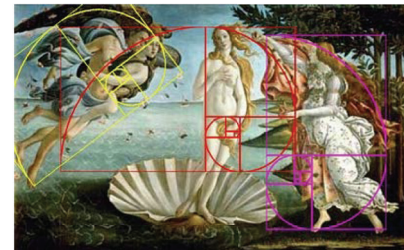


The sequence occurs in nature and in art.

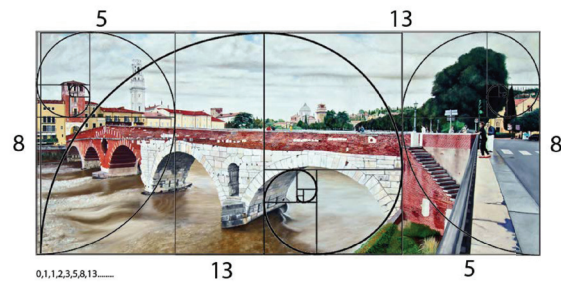
The sequence creates the perfect balance for growth and change.



Allows for correctly proportioned drawings.



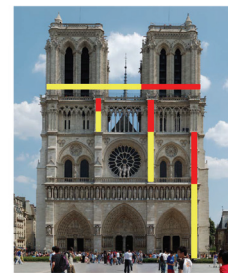
Birth of Venus



Lover's Bridge in Verona

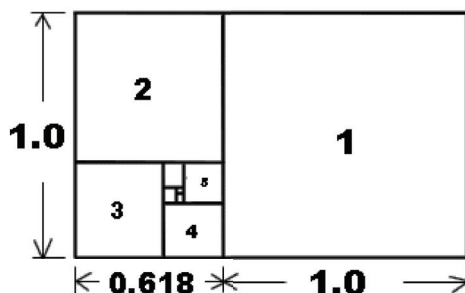
Golden Section

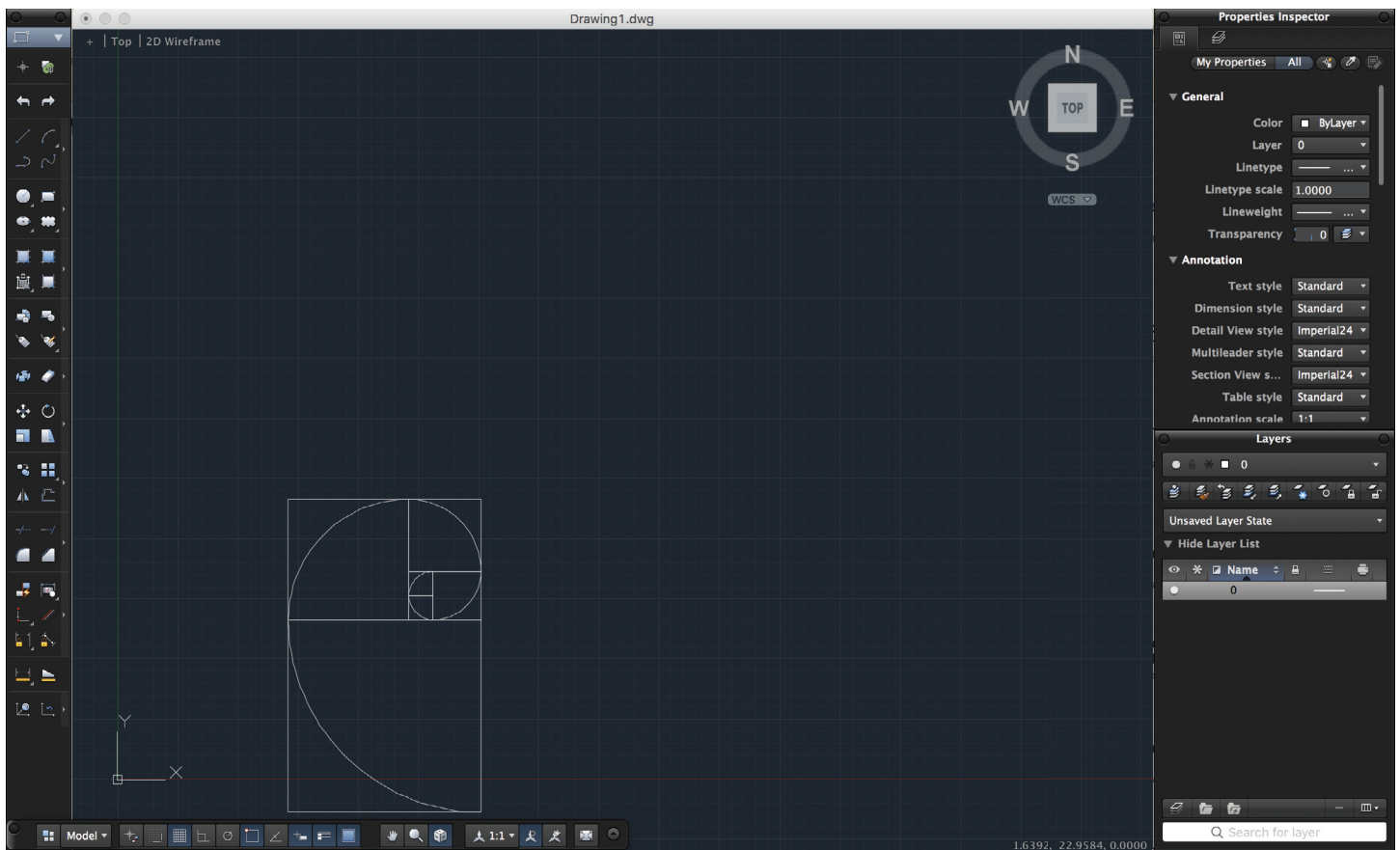
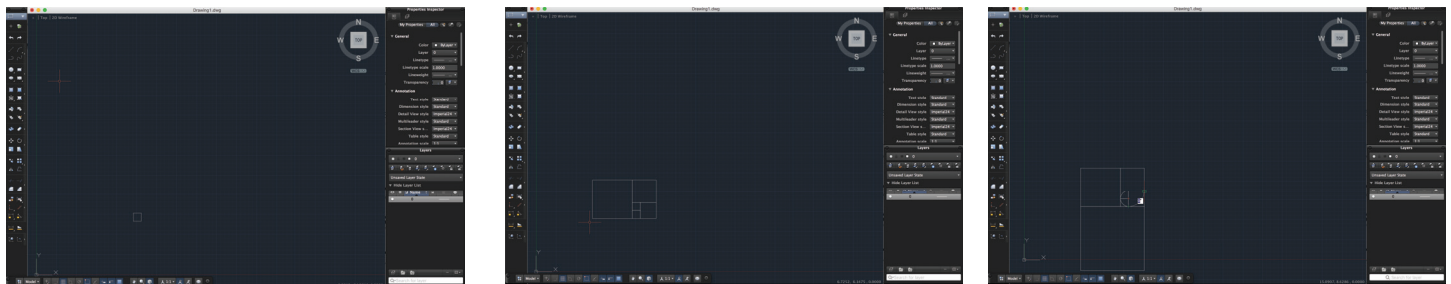
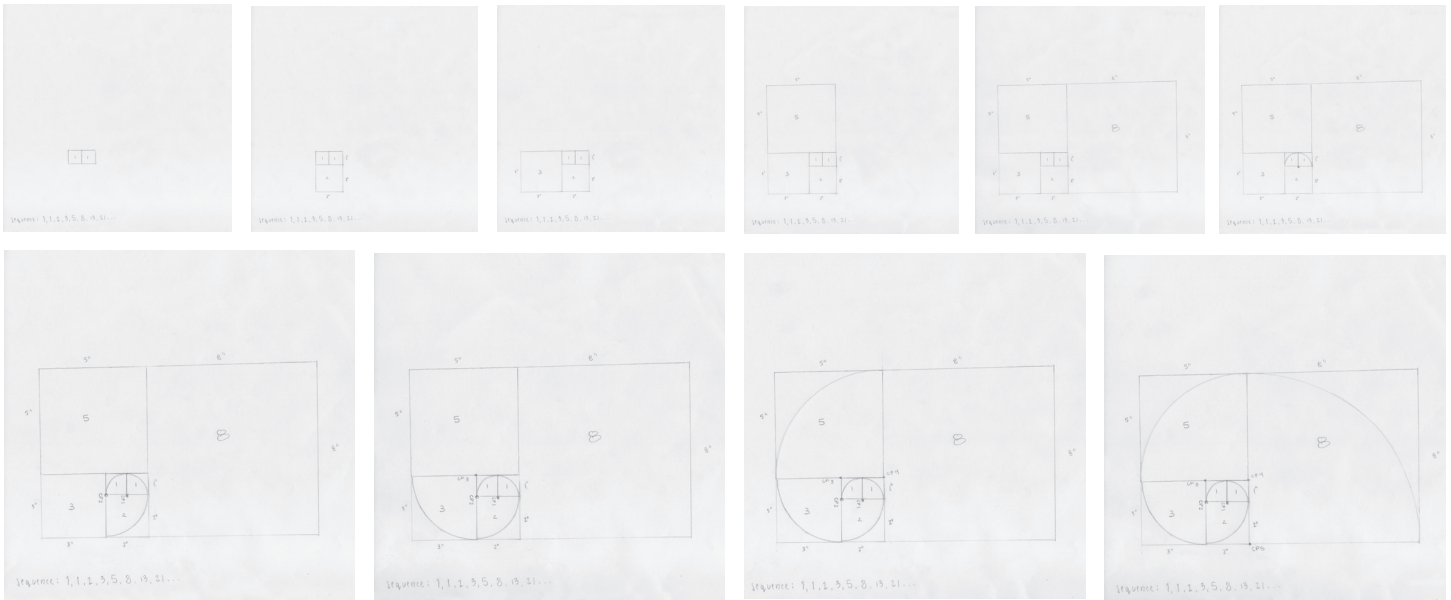
- In the 1600's Kepler discovered the relationship between Fibonacci's sequence and the Golden section
- The relationship between a number in the Fibonacci sequence and the previous number get closer to irrational number phi.
- A proportion that has been perceived as especially beautiful and harmonious.

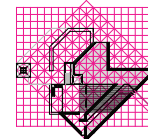
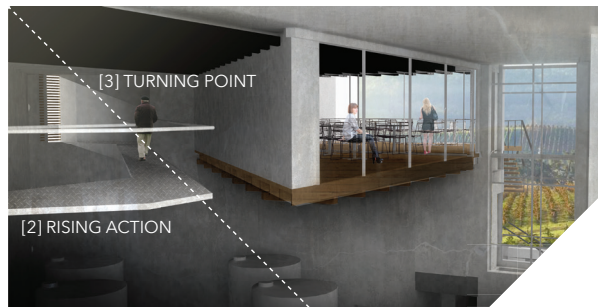
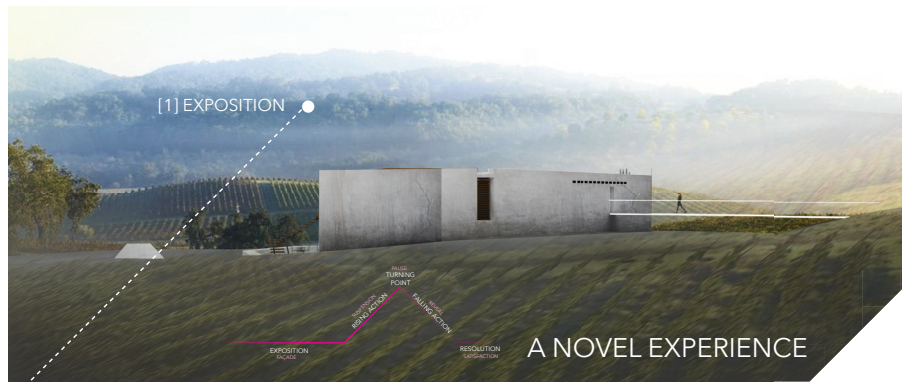


Norte Dame Cathedral

Square







This building, formed from a simple system of gables, incorporates dramatic heights and partial views in order to create a sense of discovery and a progression of spaces. The story begins with a human-scale ground-level entry to the building, then rises to a second floor, then to a third floor, and finally to a fourth floor. The building's path of experience is a continuous journey, contributing to the overall experience of the building. Within the building, the path of experience is a continuous journey, contributing to the overall experience of the building.

